

PRE-QUALIFICATION
FOR
STRUCTURAL STEEL DETAILING



PRESENTS :

BHANES STEEL

P.O.BOX: 504043

DUBAI – UAE

TEL: 04-268 2208 FAX 04-268 2207

info@bhanessteel.com

www.bhanessteel.com

STRUTECH ENGINEERING

CHENNAI

INDIA

PHONE: +91 94867 60528

info@strutechengg.com

www.strutechengg.com



INDEX

- ☛ INTRODUCTION
 - About us*
 - Infra Structure*
- ☛ PROJECTS EXECUTED
- ☛ SAMPLE MODELS



INTRODUCTION



About us

Bhanes Steel initially started with two experienced Xsteel modelers jointly working with one of the engineering & fabrication company three years ago. Today Bhanes Steel having well trained and experienced Xsteel modelers with Tekla Licenses **Head office** based in **Dubai-UAE** and **Back Office in Chennai – Tamil Nadu - India.**

Bhanes Steel, have excellent experience as an individual detailing company serving to support the Engineering & Fabrication companies in Oil & Gas, Power, Petrochemical, Process Industries, Cement Plants and also Commercial Projects. Our Engineering solutions contribute to better business outcome for clients.

With our dedicated staff of Engineers & Designers we have the capability of handling projects of all sizes. The services afford by us are Good in the industry in the field of any kind of Structural Engineering



Infra Structure

Dubai Office

500 Sqft Office Space
High Configured Work Stations with 1 Gbps Network
A3 Printer and Scanner
24 hrs 512 kbps Internet
Unlimited FTP Server
5000 E-mail Id's

India Office

2000 Sqft Office Space
High Configured Work Stations with 2 Gbps Network
A3 Printer and Scanner
24 hrs 512 kbps Internet
Unlimited FTP Server
5000 E-mail Id's
Standby Power Generator



PROJECT EXECUTED



Project Name/EPC contractor	Tonnage	Year
<p>➤ <u>TURKMENGAS DEVELOPMENT – PETROFAC</u></p> <p>Pipe Racks/Tech Structures/Sub Station Bldgs. / Circular/Horizontal Platforms/ Pipe supports and Misc etc.,</p>		2010-2011
<p>➤ <u>QP – PETROFAC</u></p> <p>Pipe Racks/Tech Structures/Misc. etc.</p>		
<p>➤ <u>BOROUGE 3 – UTILITIES & OFFSITE PROJECTS – HYUNDAI</u></p> <p>Pipe Racks</p>		2010-2011
<p>➤ <u>NATIONAL UNIVERSITY HOSPITAL – TYLIN INTL</u></p> <p>19 STORY UNIV. HOSPITALS – SINGAPORE</p>		2010-2011
<p>➤ <u>WWTPP – BAHRAIN – GS ENGG & CONSTRUCTION</u></p> <p>Pipe Racks/shelters and Misc. etc.</p>		2010-2011
<p>➤ <u>CAR PARKING STRUCTURE – DUBAI – AL HIKMA TOWER</u></p> <p>Building structure incl Stair case</p>		2010-2011
<p>➤ <u>STRATEGIC GRAIN RESERVE STRUCTURE – FUJAIRAH</u></p> <p>Packing tower, Silo support Structures</p>		2010-2011



<i>Project Name/EPC contractor</i>	<i>Tonnage</i>	<i>Year</i>
➤ <u>DUBAI METRO – GREEN LINE/ATKINS</u>		
Foot Bridges – 11 stations		2009-2010
Entrance Pods – 11 stations		
Entrance Pod Canopy – Narrow & Wide		
➤ <u>EL-MERK – ALGERIA – PETROFAC</u>		
Pipe Racks/Tech Structures/Sub Station Bldgs. etc.		2009-2010
➤ <u>COMMERCIAL PROJECTS – UAE</u>		
U-Bora Tower – Dubai	650	2009-2010
TRA buildings – Dubai	250	2009-2010
Platinum Tower – Jumeirah	350	2009-2010
Park Tower – Dubai	235	2009-2010
Zamalek Tower – Dubai	155	2009-2010
Pinnacle Tower – Dubai	100	2009-2010
➤ <u>PROJECT– TECHNIP</u>		
Pipe Racks	850	2009-2010
➤ <u>ADCO – ABU DHABI – PETROFAC</u>		
Pipe Racks/Tech Structures/Sub Station Bldgs. etc.		2009-2010



Project Name/EPC contractor	Tonnage	Year
➤ <u>QATALUM – QATAR / FATA – KHOME</u>		
Anode Baking Plant		2008-2009
Cast House 1 – 7 (Phase 1)		
Cast House 7 -14 (Phase 2)		
➤ <u>DUBAI METRO – RED LINE /ATKINS</u>		
Foot Bridges – 15 stations		2008-2009
Entrance Pods – 15 stations		
Station Extensions – 15 stations		
Entrance Pod Canopy – Narrow & Wide		
➤ <u>WASTE TO ENERGY PLANT/QATAR – KEPPEL SEGHERS/ANSALDO</u>		
Boiler Structure		2008-2009
➤ <u>MARINA BAY HOTEL TOWER/SINGAPORE – ARUP</u>		
		2008-2009



Project Name/EPC contractor	Tonnage	Year
➤ <u>QURRAYYAH SEAWATER PLANT/SAUDI</u> - SNAMPROGETTI		2007-2008
➤ <u>ARAMCO - KHURAIIS DEVLOPMENT/SAUDI</u> -SNAMPROGETTI		2007-2008
➤ <u>QATAR RASGAS TRAIN 6&7</u> - CHIYODA - CTJV		2007-2008
➤ <u>OLEFINES PLANT/YANBU</u> - TECHNIP ITALY		2007-2008
➤ <u>YEMEN LNG</u> - TECHNIP ITALY		2007-2008
➤ <u>FPSO TOPSIDE MODULES</u> - SAIPEM/SBM		2007-2008
➤ <u>AWEER GAS TURBINE POWER STATION</u> - FICHTNER GMBH (STATION H - PHASE III)		2007-2008
➤ <u>RABIGH EXPANSION</u> - TECHNIP ITALY MISC STEEL DETAILING		2007-2008
➤ <u>NORTH BELUT ACCOM MODULE</u> - CONOCCO PHILLIPS		2007-2008
➤ <u>QATAR GAS</u> - DODSAL Pipe Bridges		2007-2008
➤ <u>CHIYODA PROJECT</u>		2007-2007
➤ <u>QNCC PROJECT</u> - IHI		2007-2008
➤ <u>FCC SEAWATER SCRUBBER</u> -ALSTOM		2007-2008
➤ <u>EMIRATES ENGG HANGER</u> - ADPI/DAR		



Project Name/EPC contractor	Tonnage	Year
➤ <u>LAYYAH POWER STATION – EXP</u> – SIDEM	250	2006-2007
➤ <u>RASLAFFAN – QP</u> – KIRCHNER ITALY	400	2006-2007
➤ <u>RAG AND FLARE MITIGATION</u> – PETROFAC	250	2006-2007
➤ <u>SOHAR ALUMINIUM</u> – BECHTEL		2006-2007

AISC DETAILING

Buffalo public schools – Hillery Park elementary – Buffalo, New york

Walgreens Pharmacy – Michigan

Orchard Park High School –New York

Buffalo Public School – Addition/renovation – Buffalo, New york.

Borgess Lee Memorial Hospital – Michigan

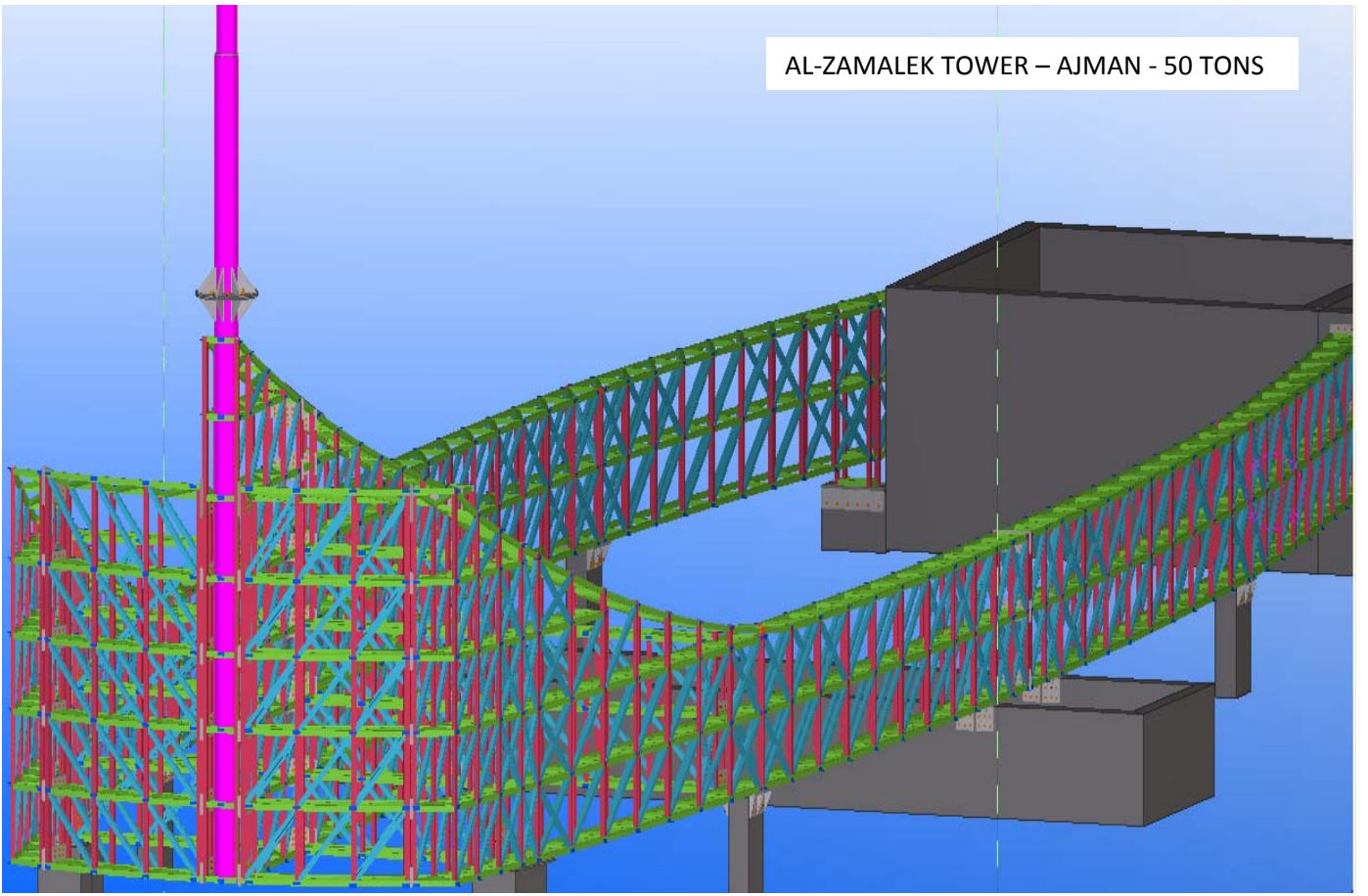
Fox Ford/Mazda – Michigan

- 800 TONS

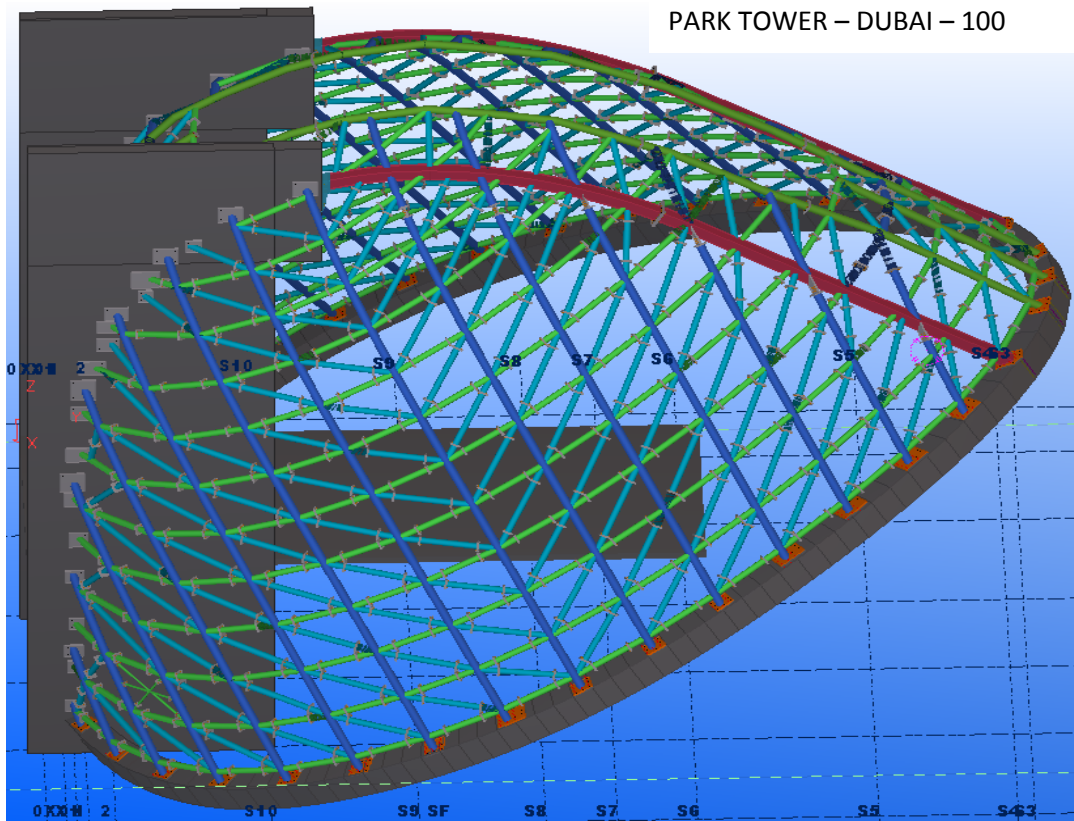


☛ SAMPLE MODELS

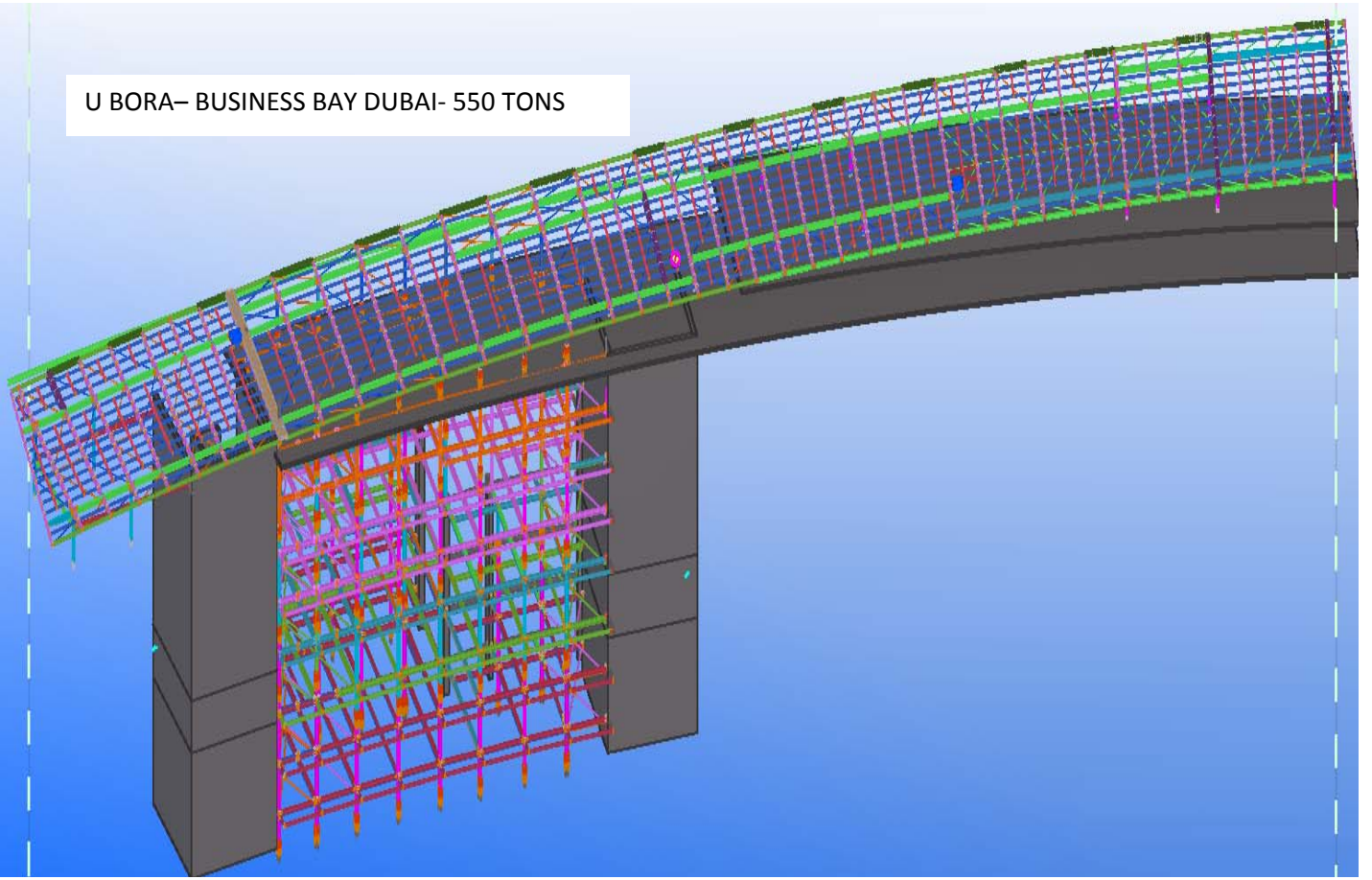
AL-ZAMALEK TOWER – AJMAN - 50 TONS



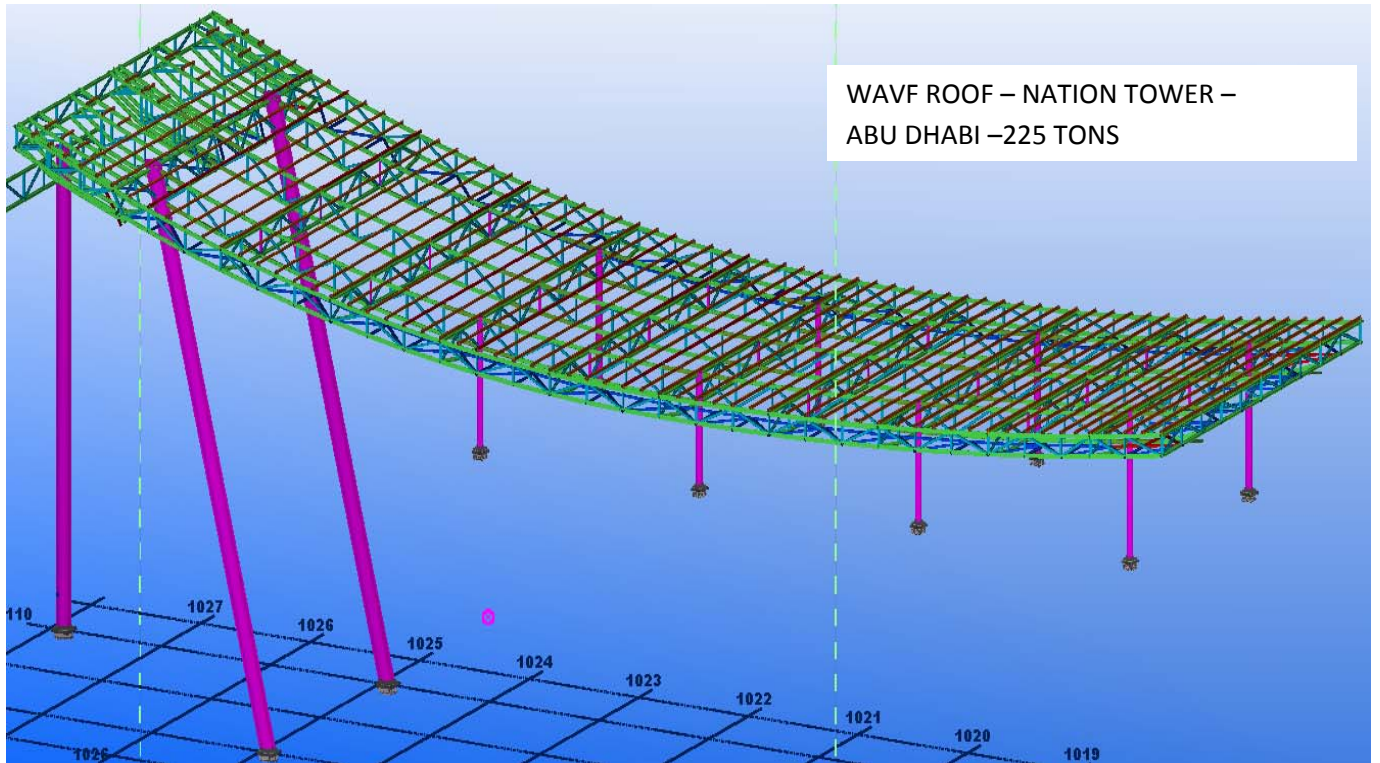
PARK TOWER – DUBAI – 100



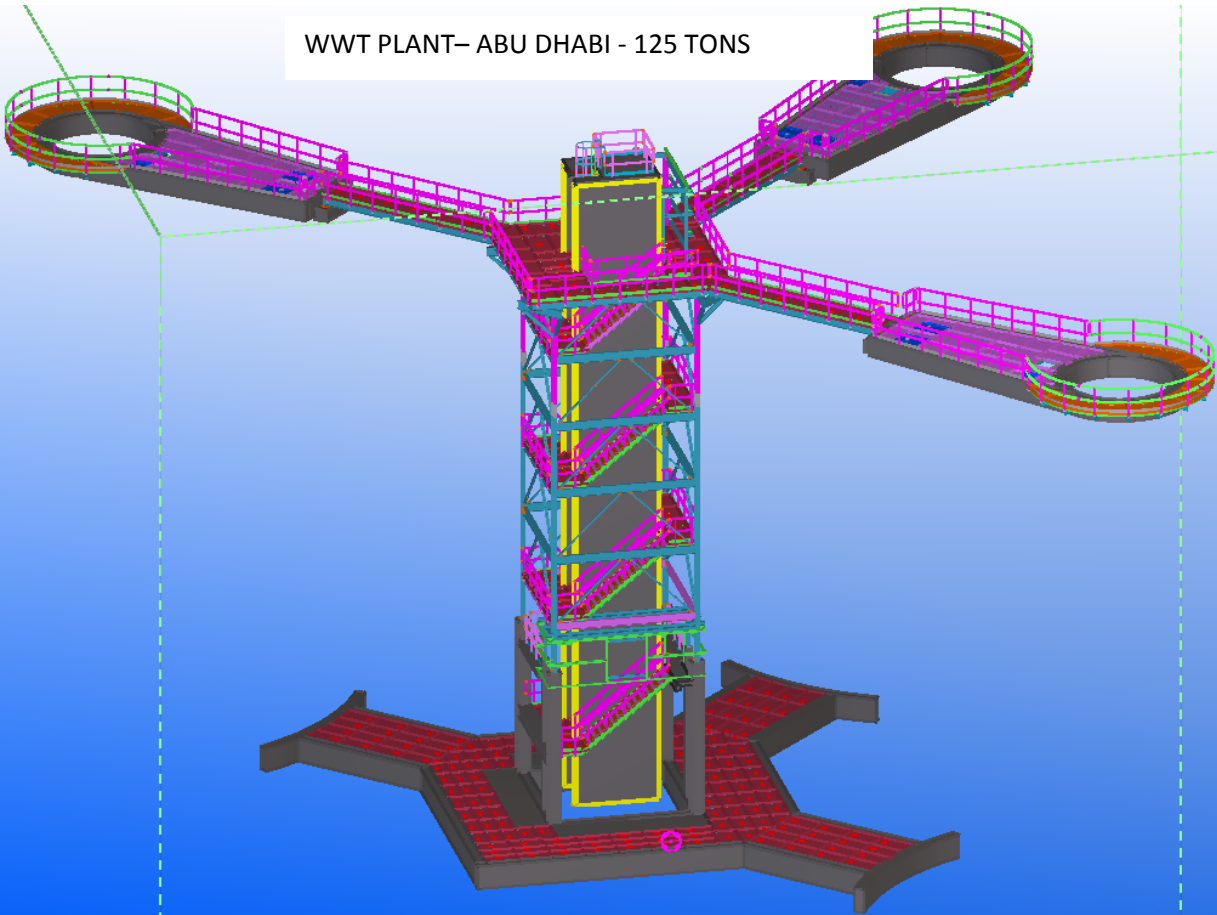
U BORA- BUSINESS BAY DUBAI- 550 TONS



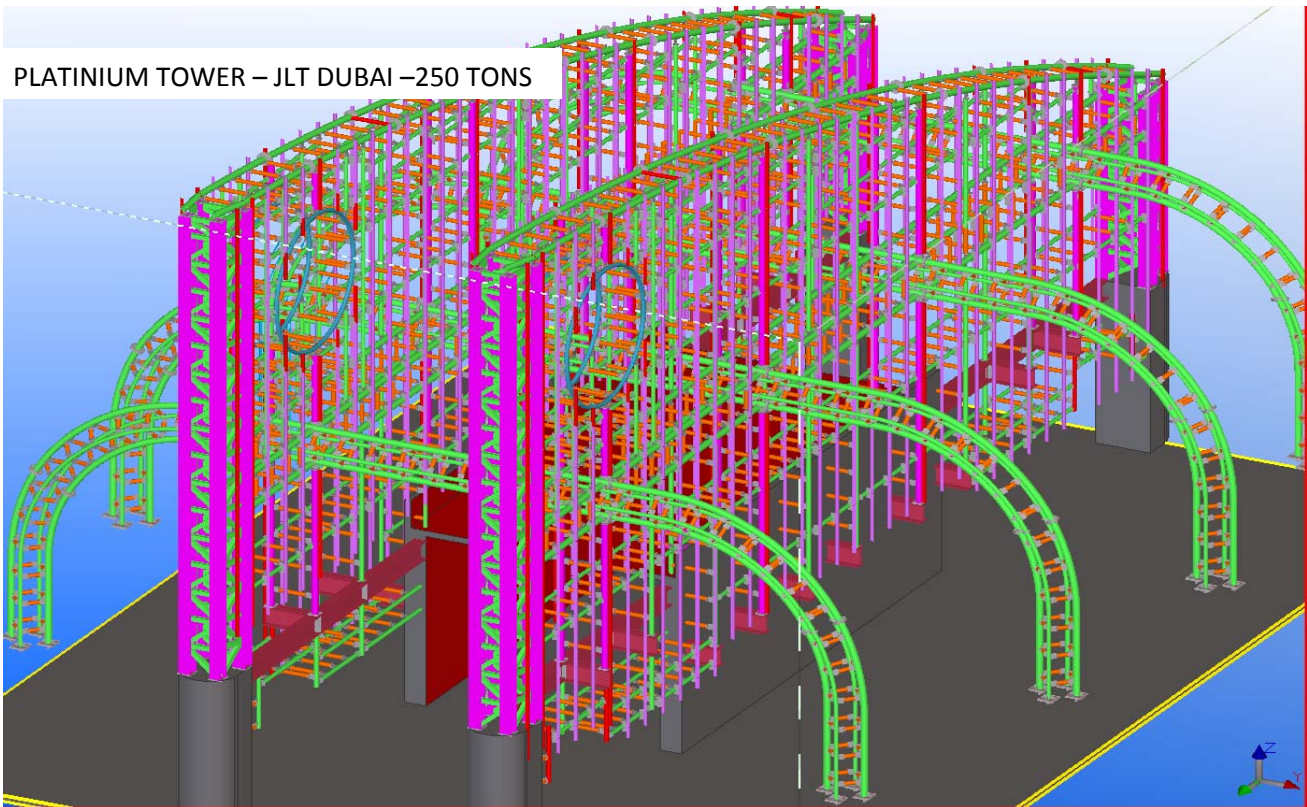
WAVE ROOF - NATION TOWER -
ABU DHABI - 225 TONS



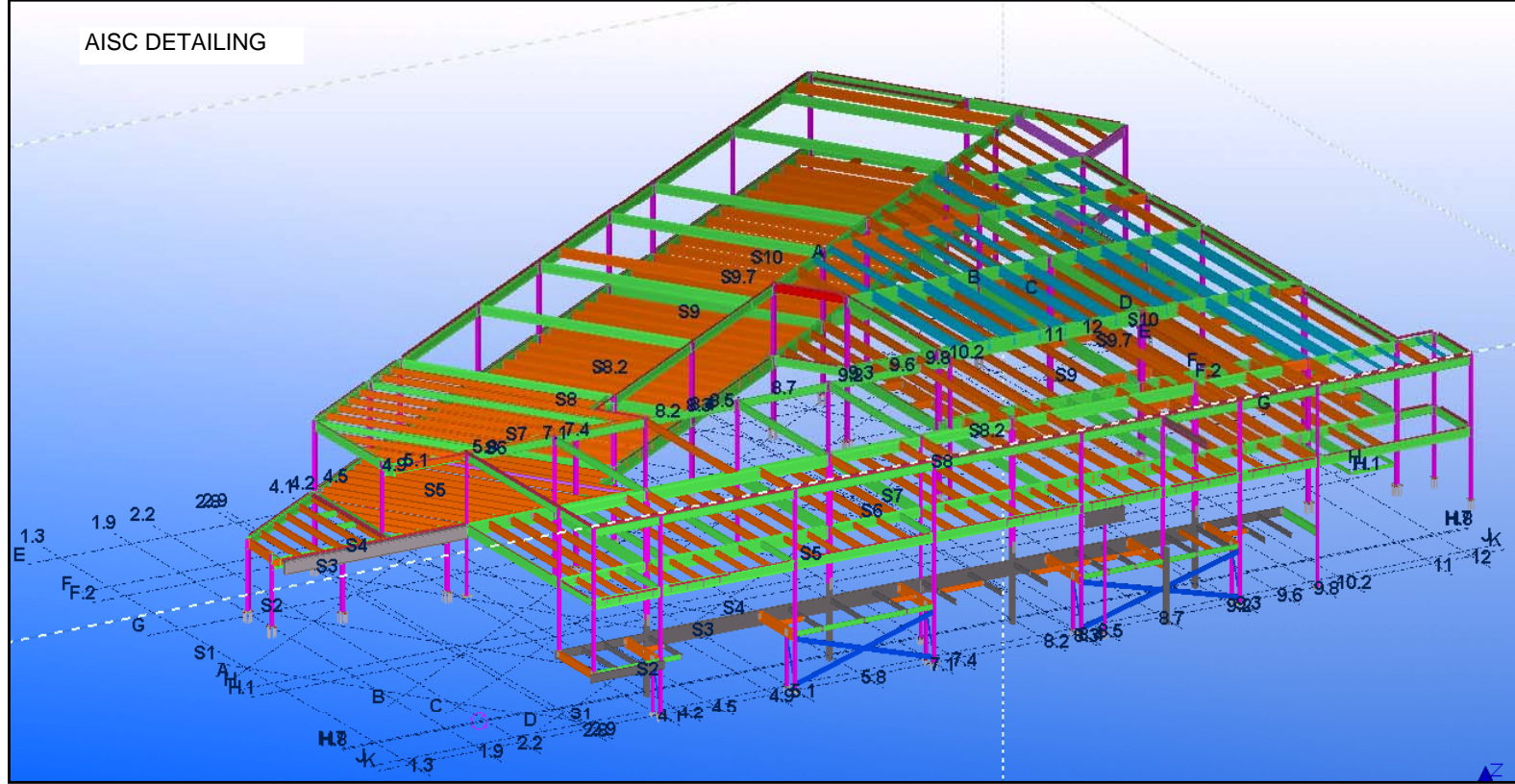
WWT PLANT- ABU DHABI - 125 TONS



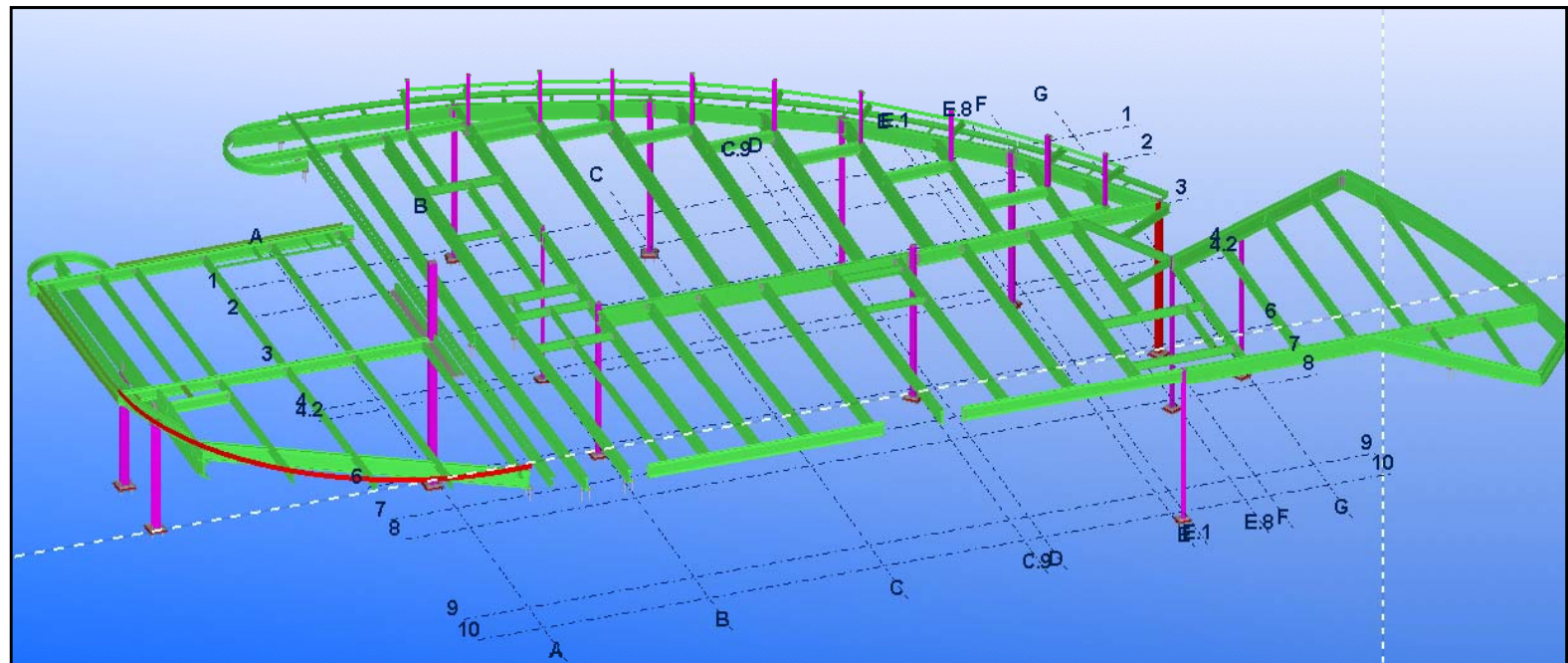
PLATINIUM TOWER – JLT DUBAI –250 TONS



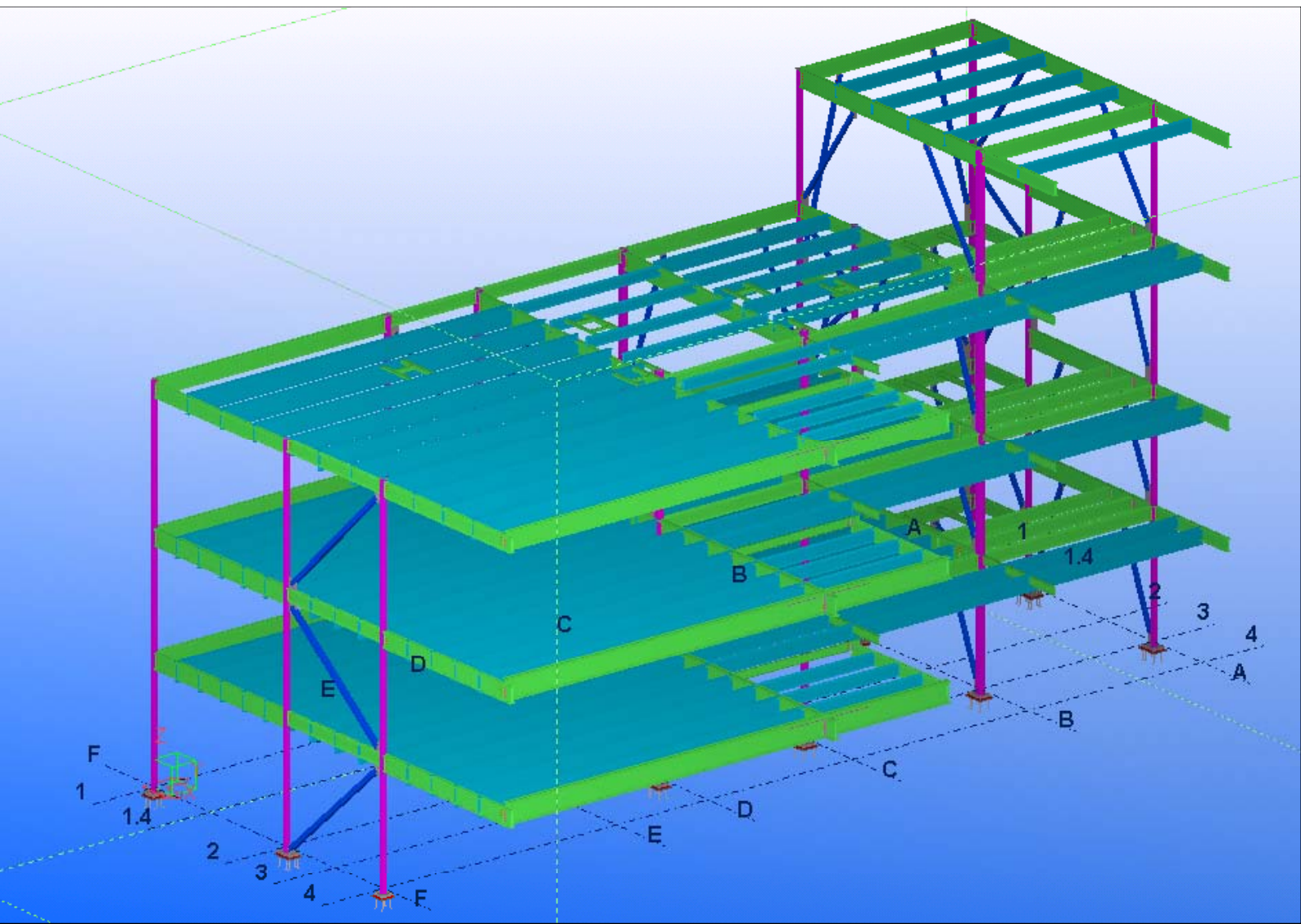
AISC DETAILING



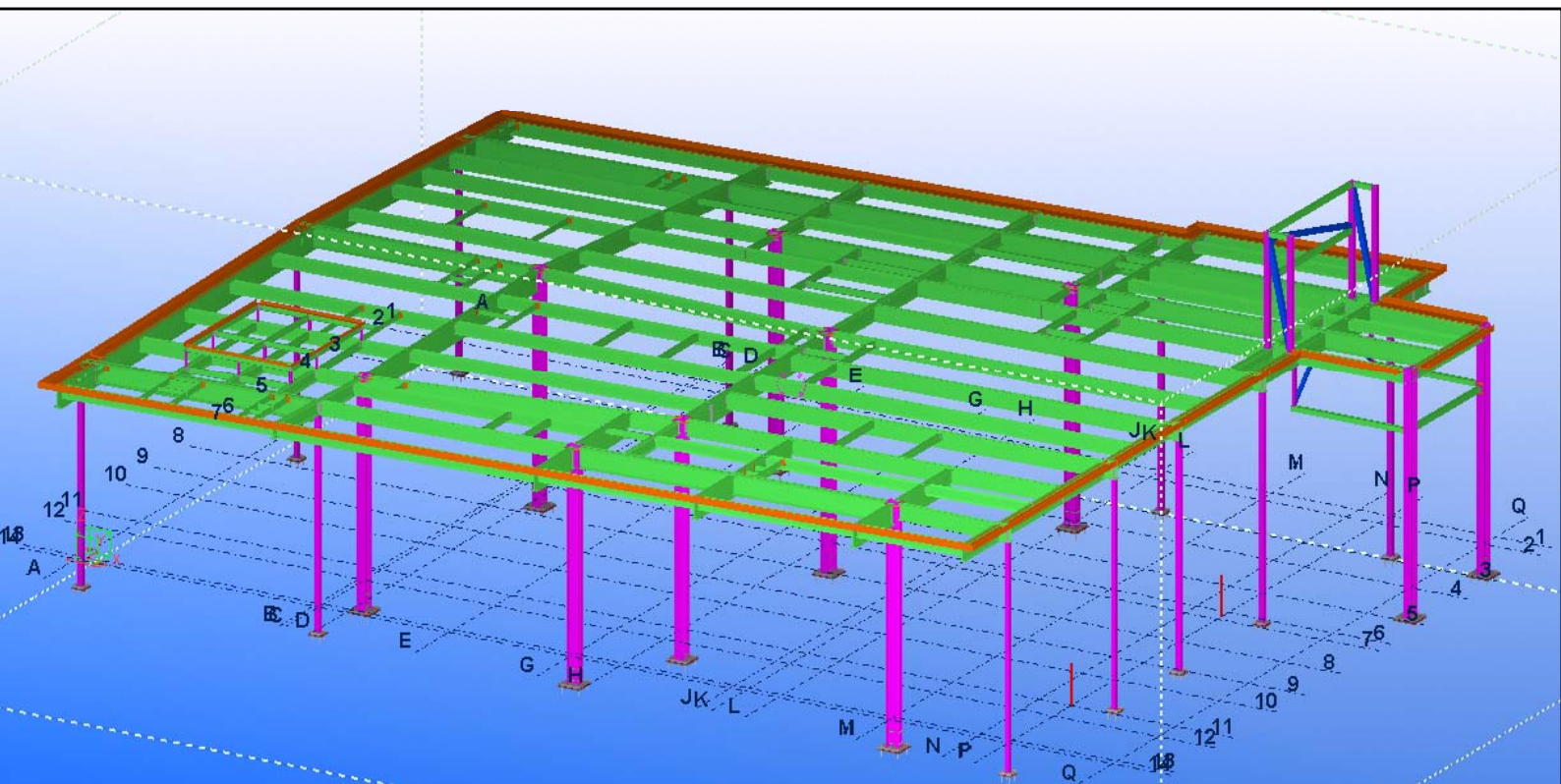
HILLERY PARK SCHOOL BLDG



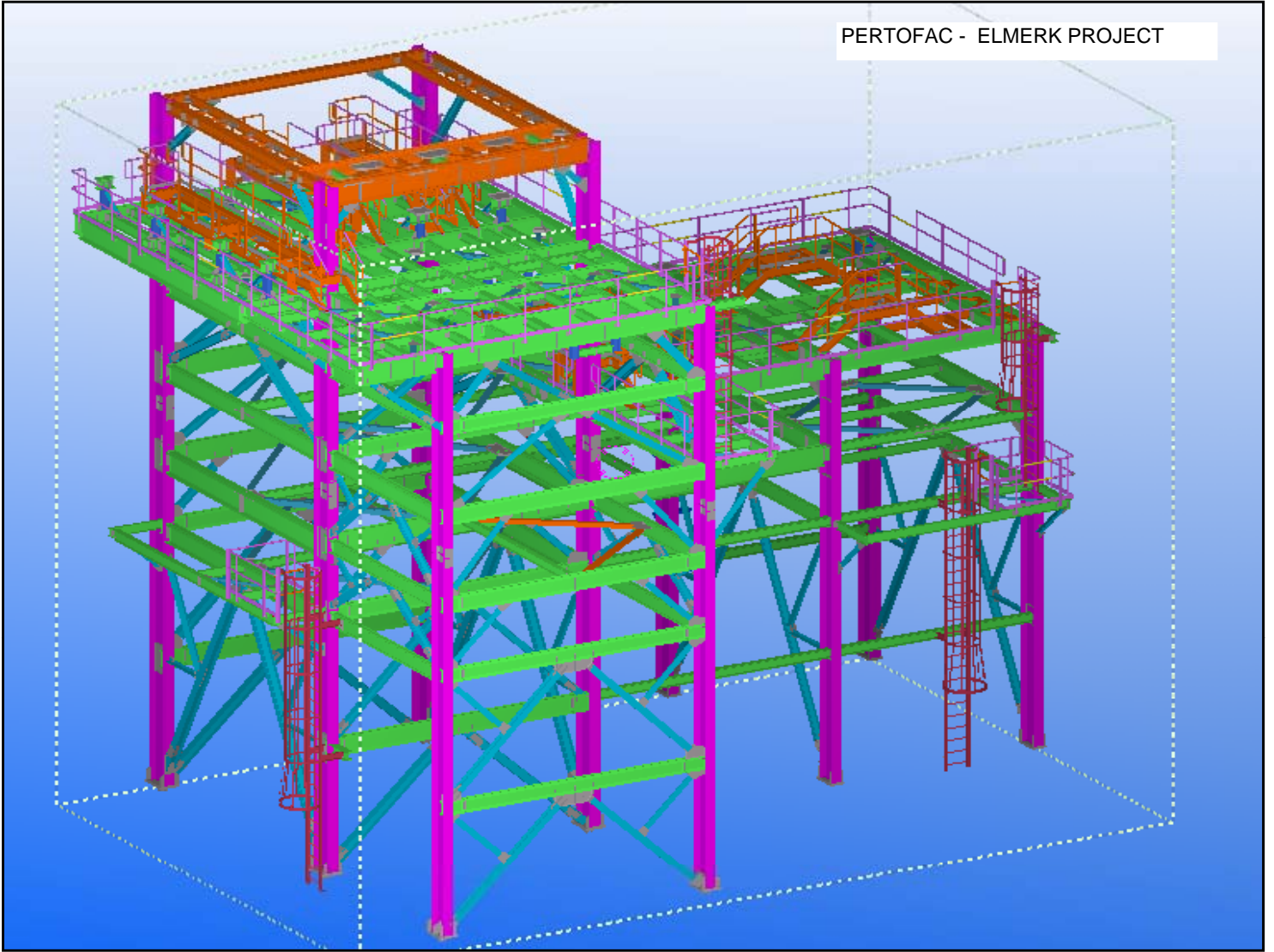
WALGREENS PHARMACY



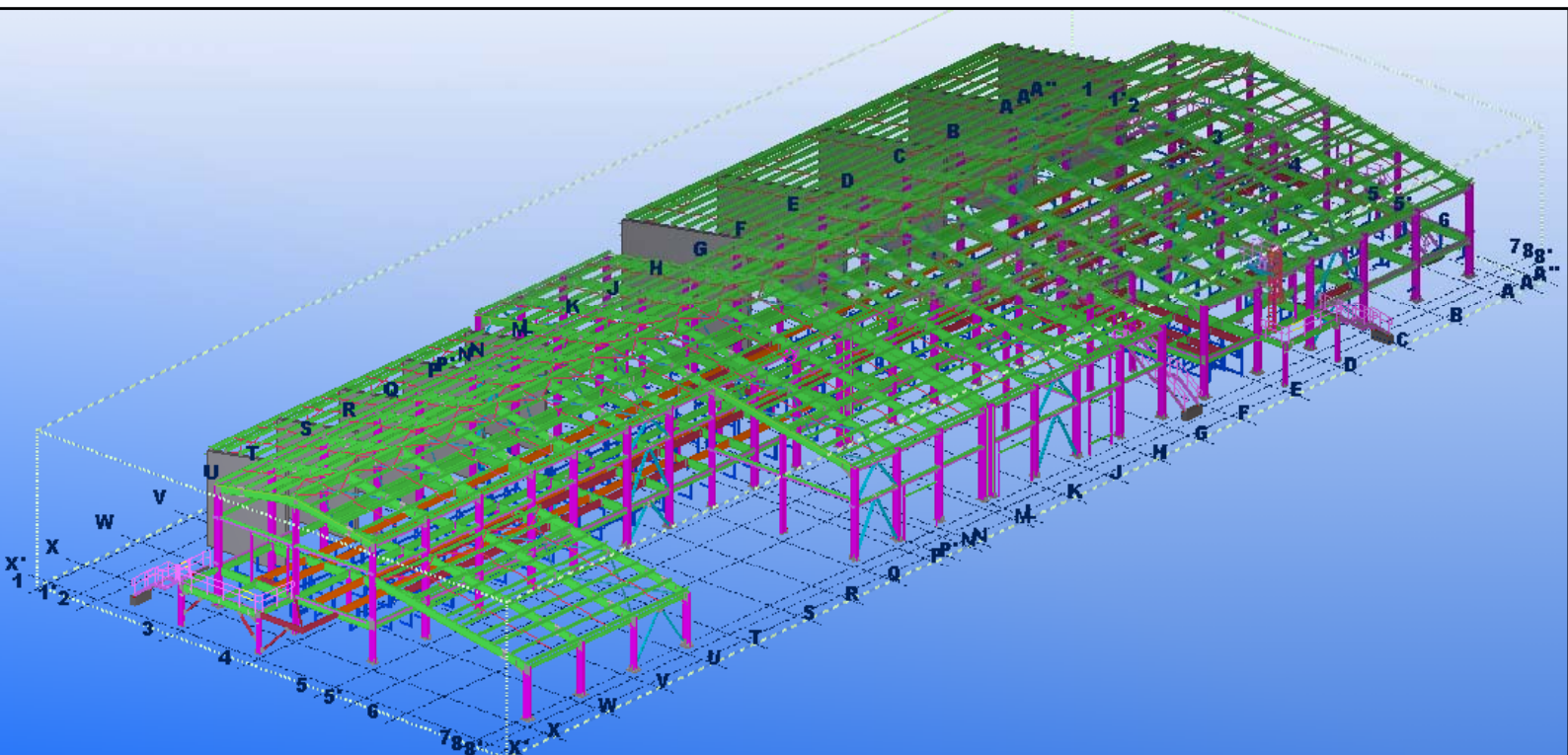
ORCHARD PARK HIGH SCHOOL AREA-C



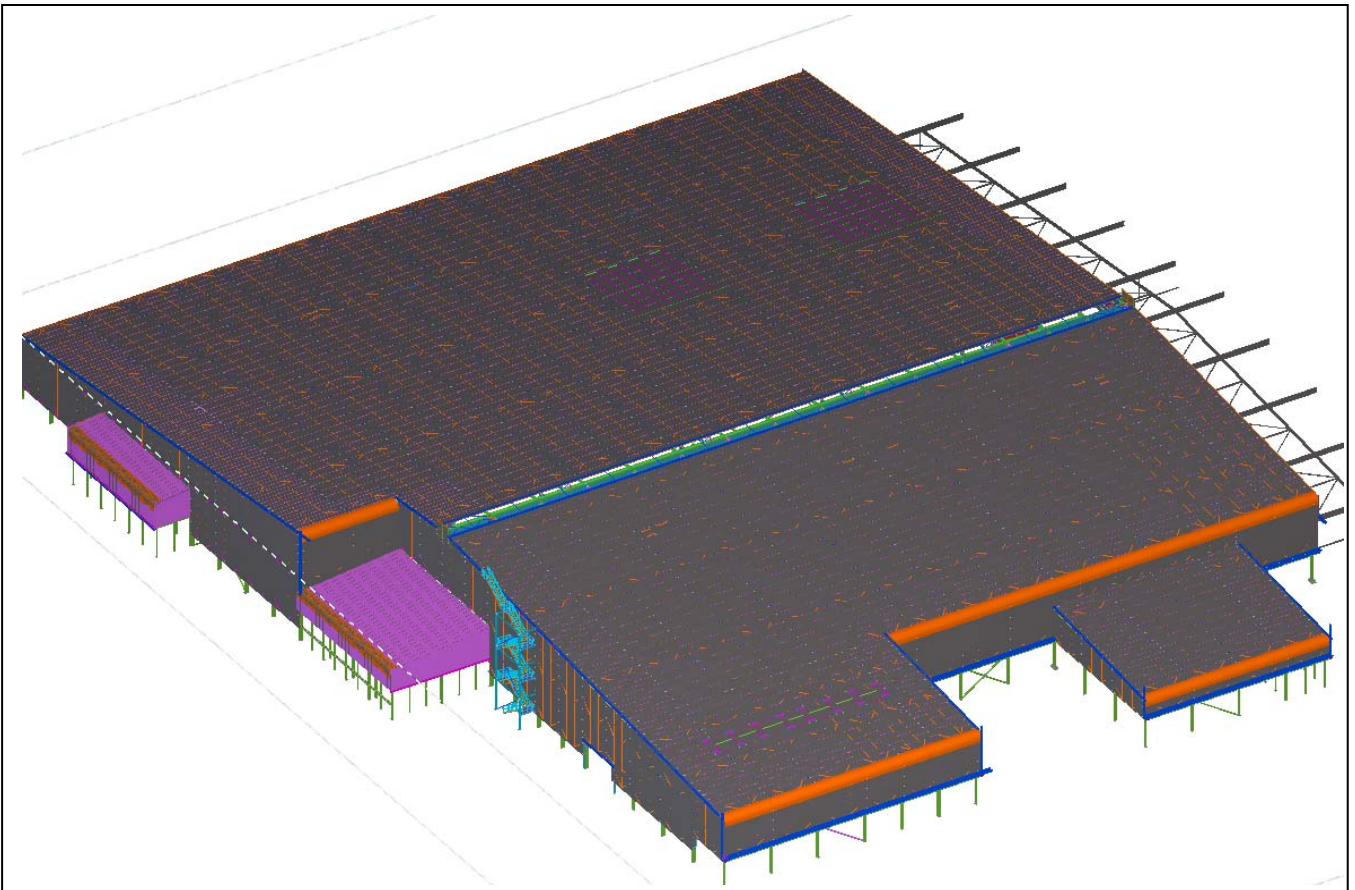
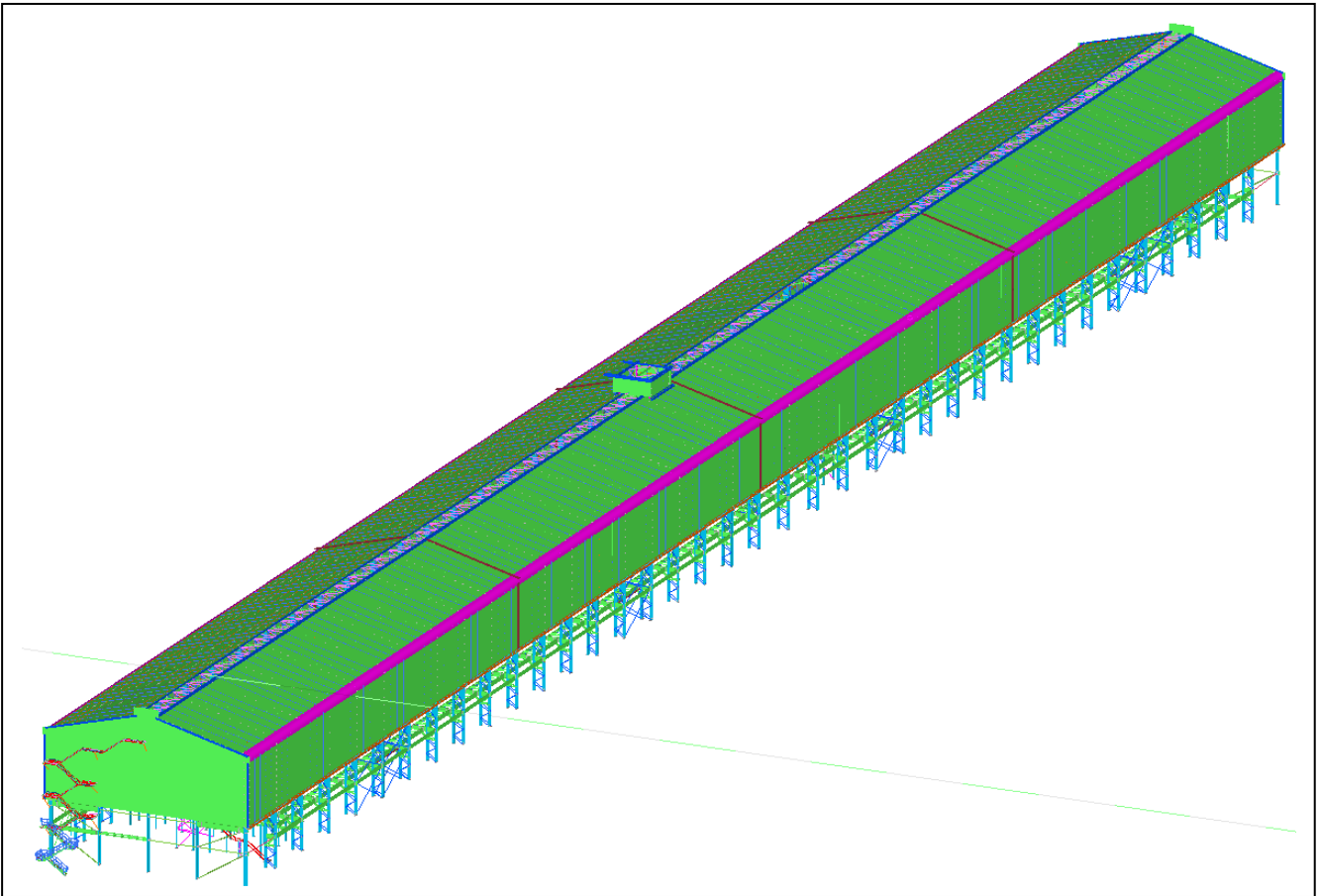
THE CHEESECAKE FACTORY - NEW JERSEY



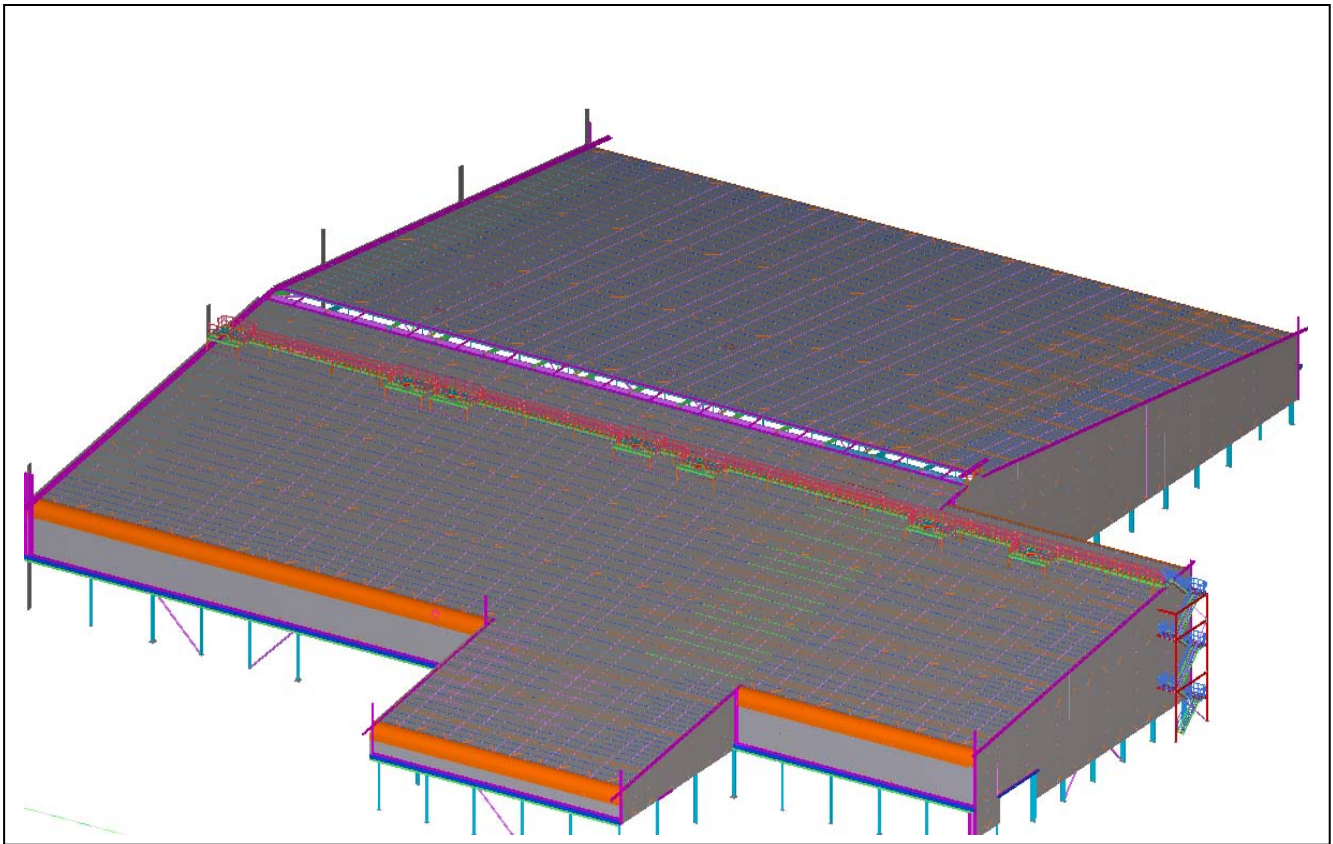
TECHNICAL STRUCTURE - 14



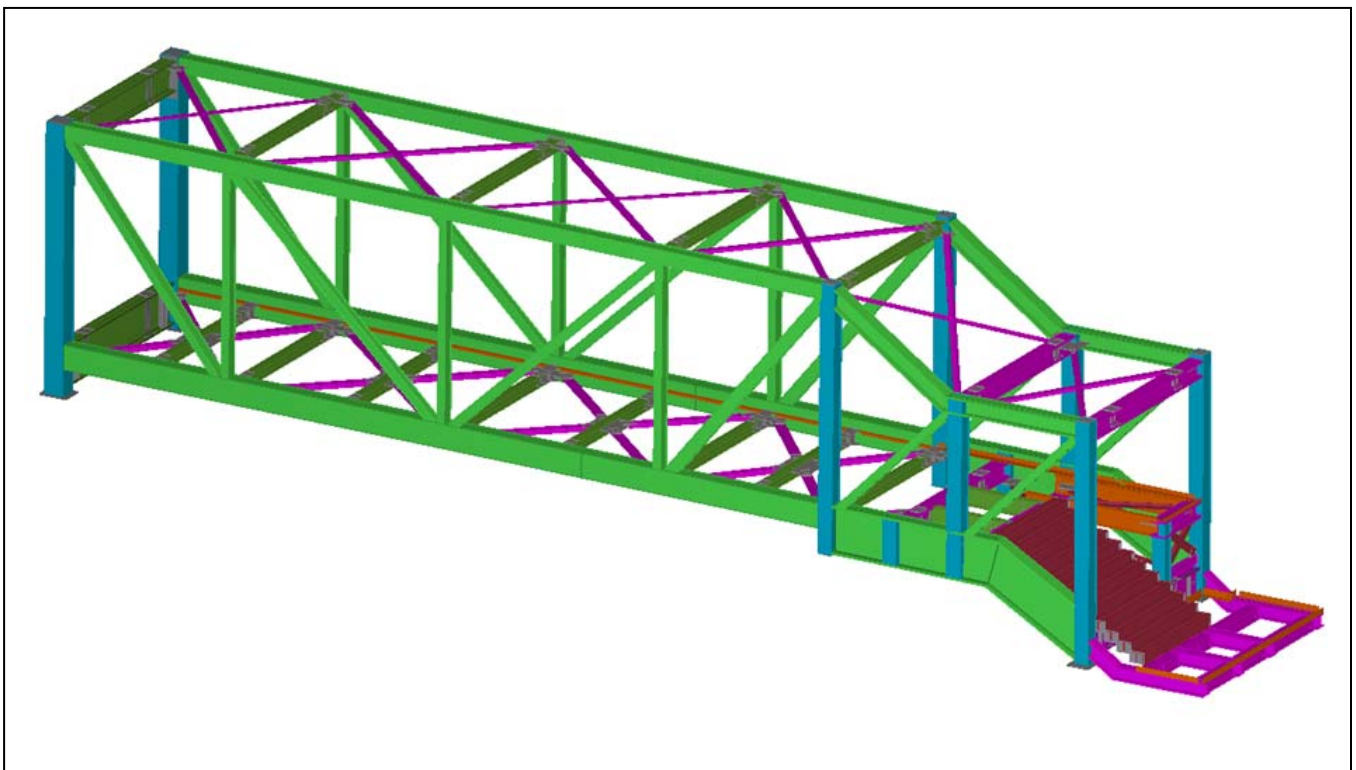
SUBSTATION BUILDING-1

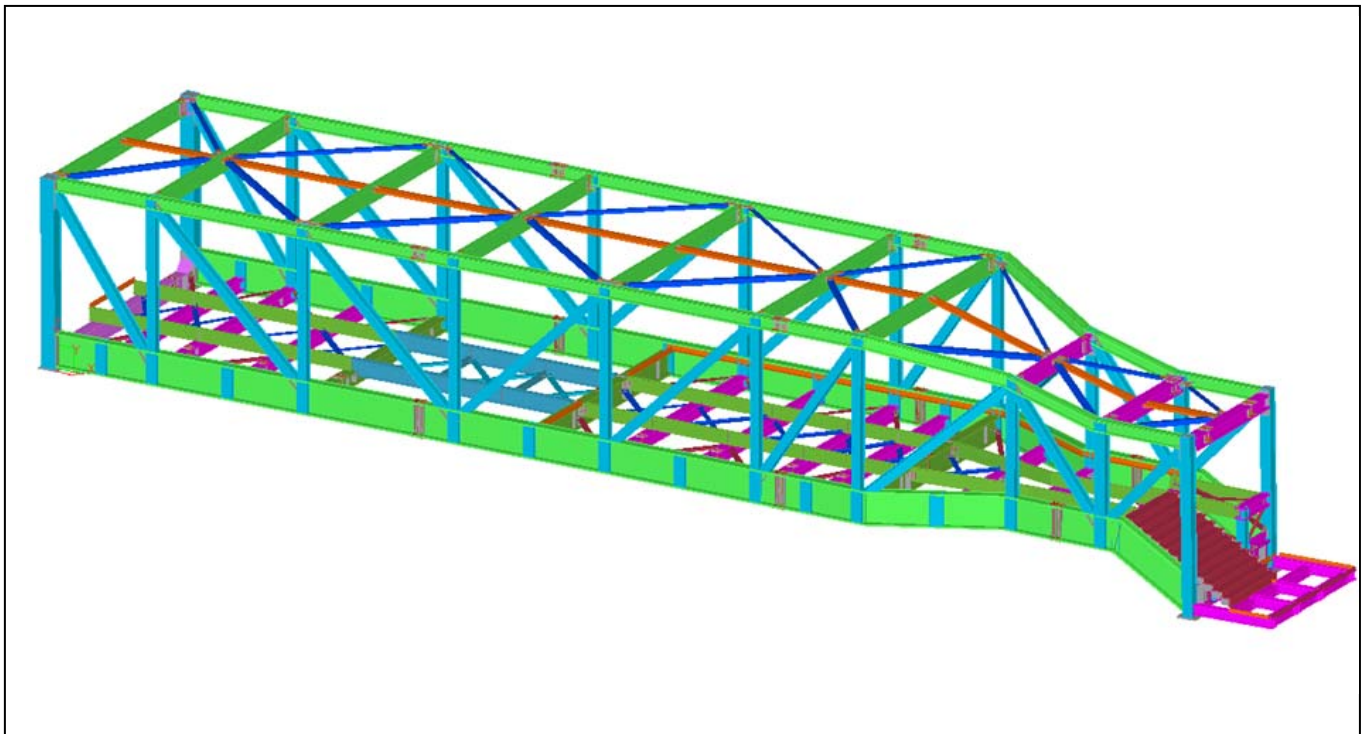
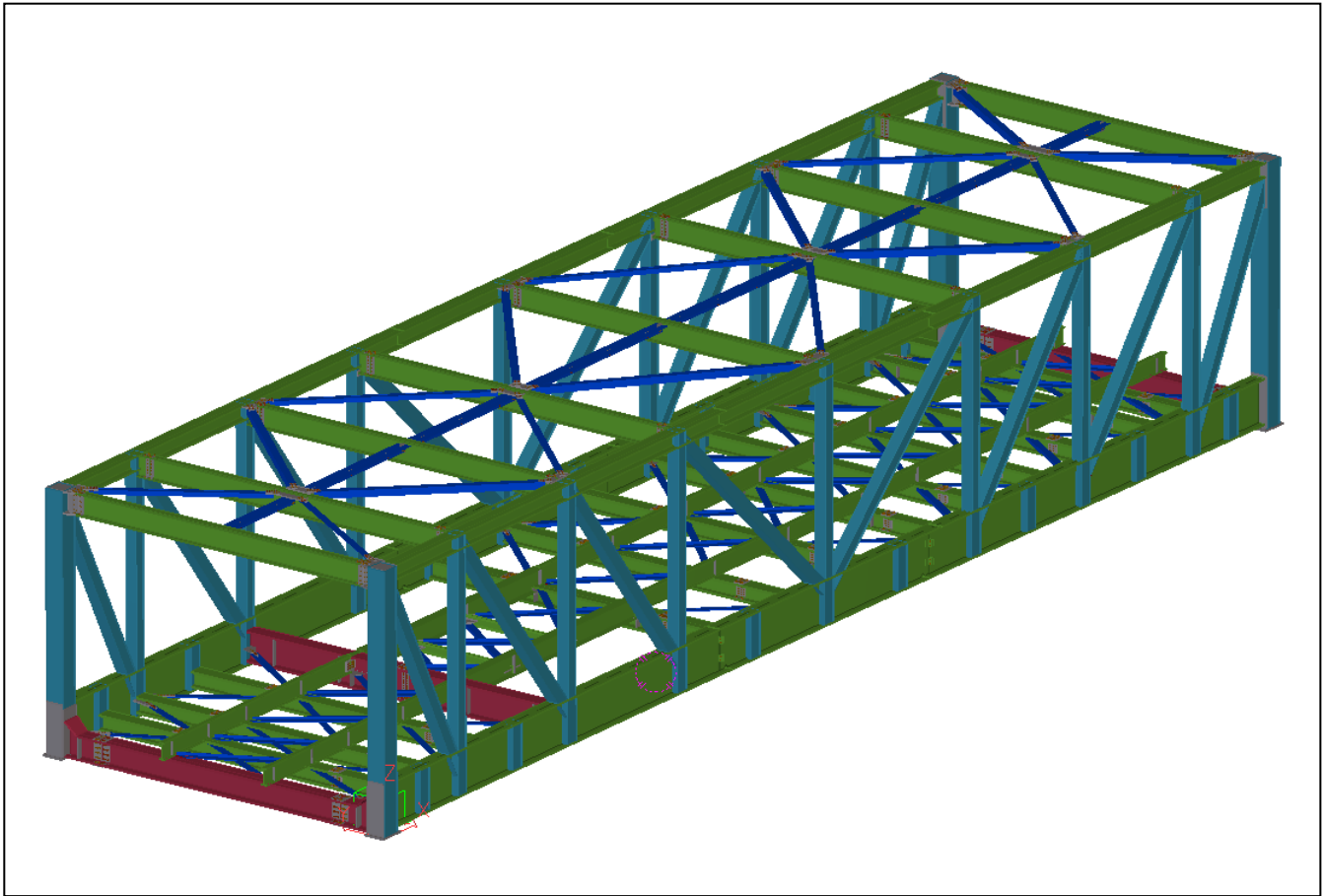


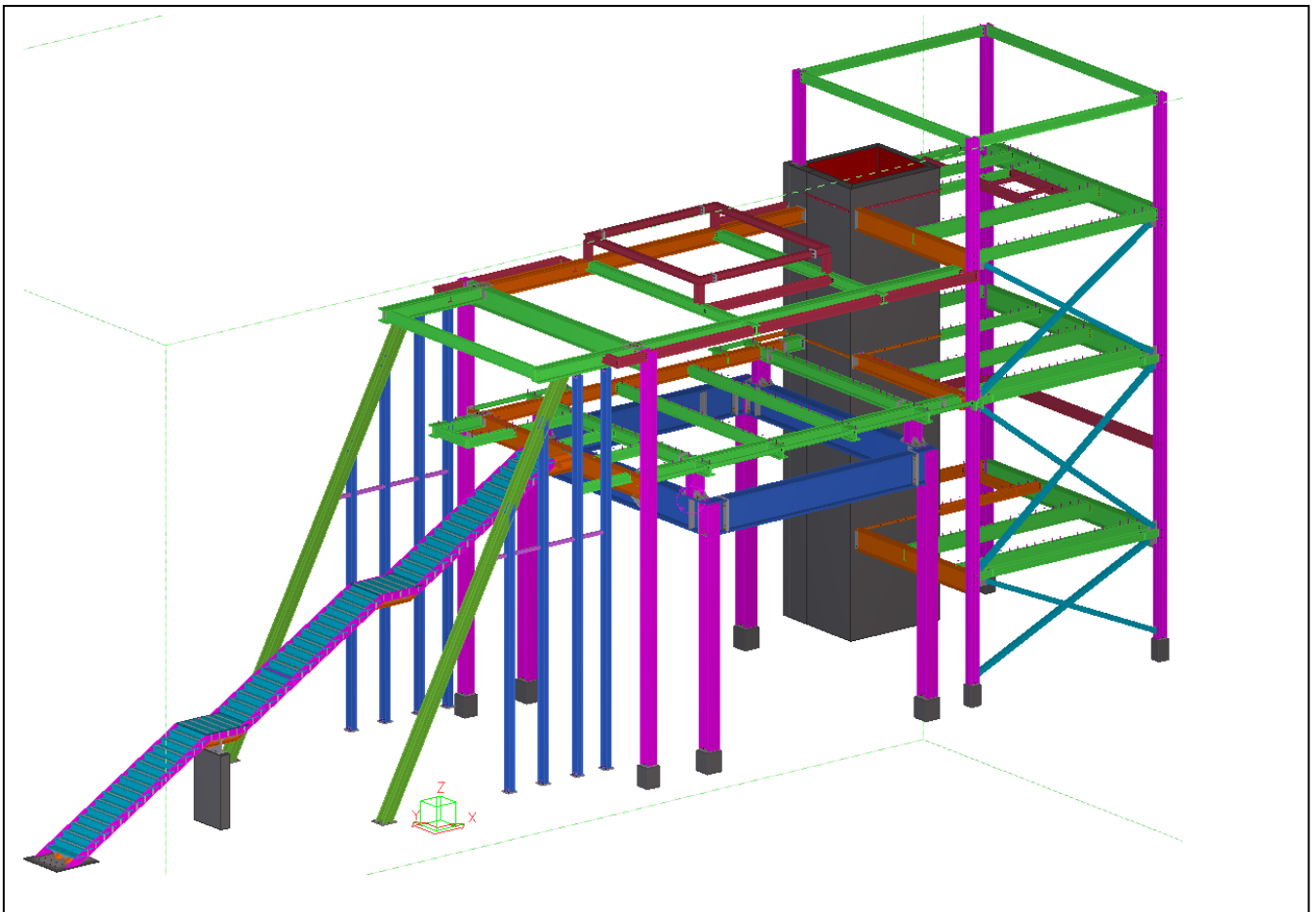
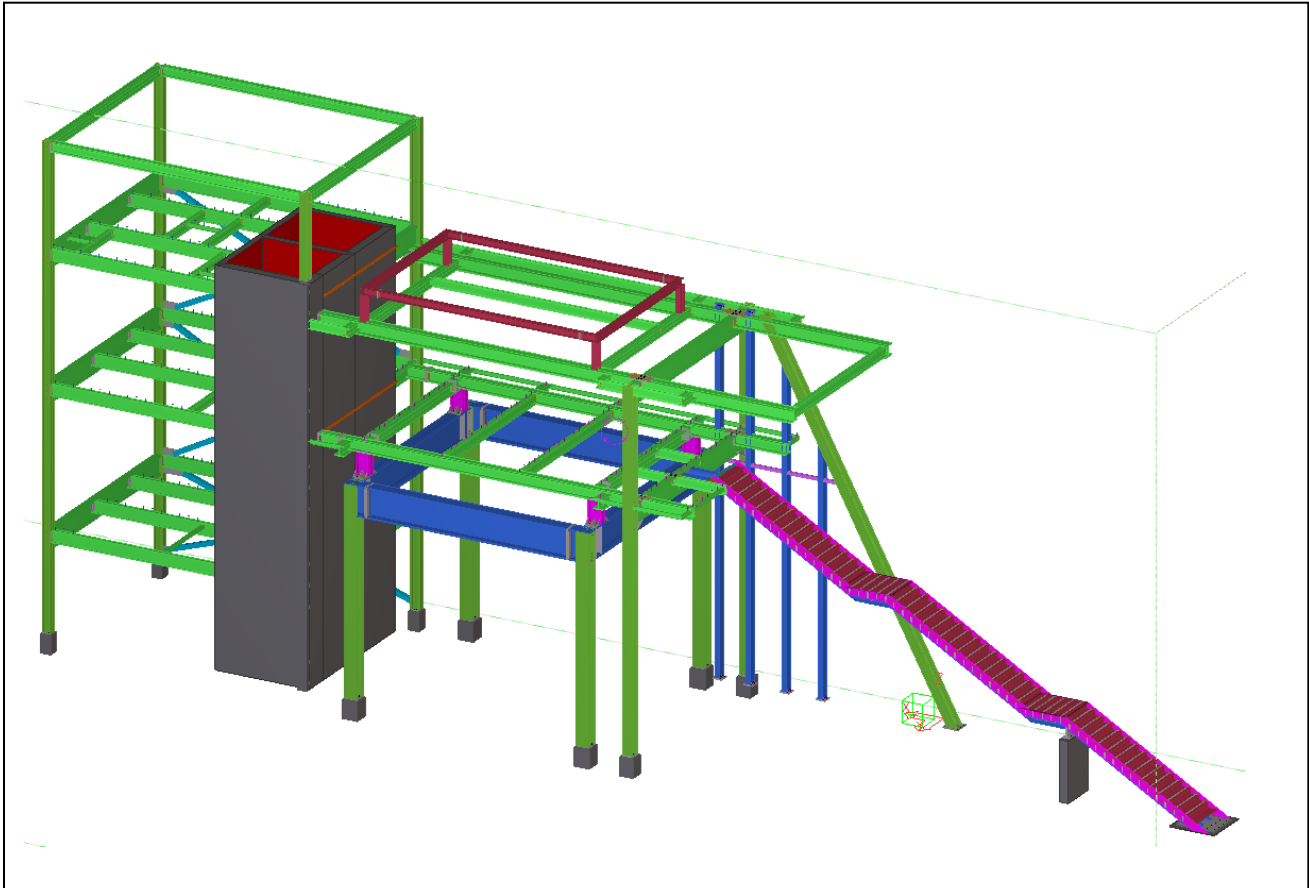
QATALUM – QATAR – FATA/KHOME – CAST HOUSE - 2

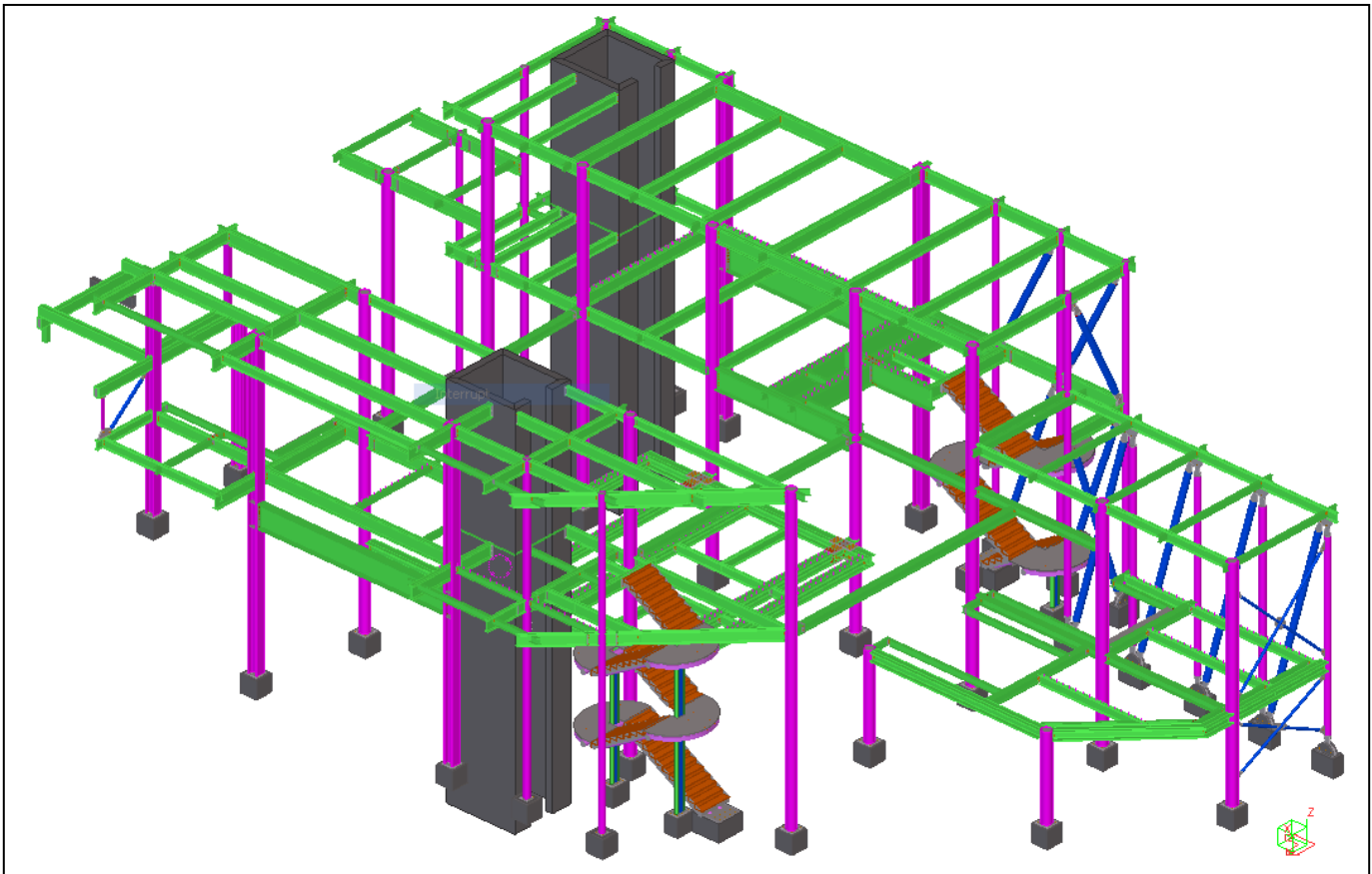
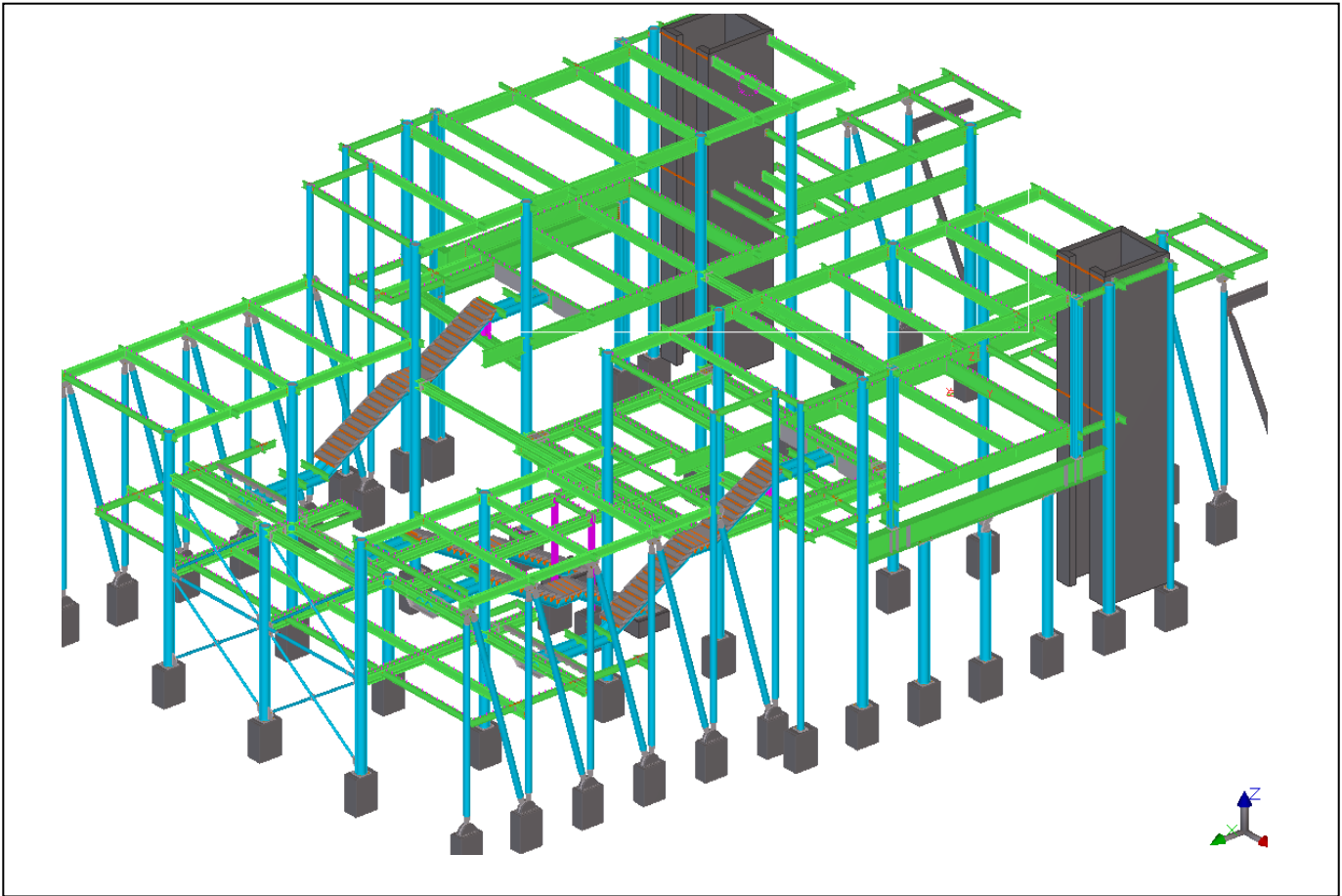


DUBAI METRO – FOOT BRIDGES – ATKINS

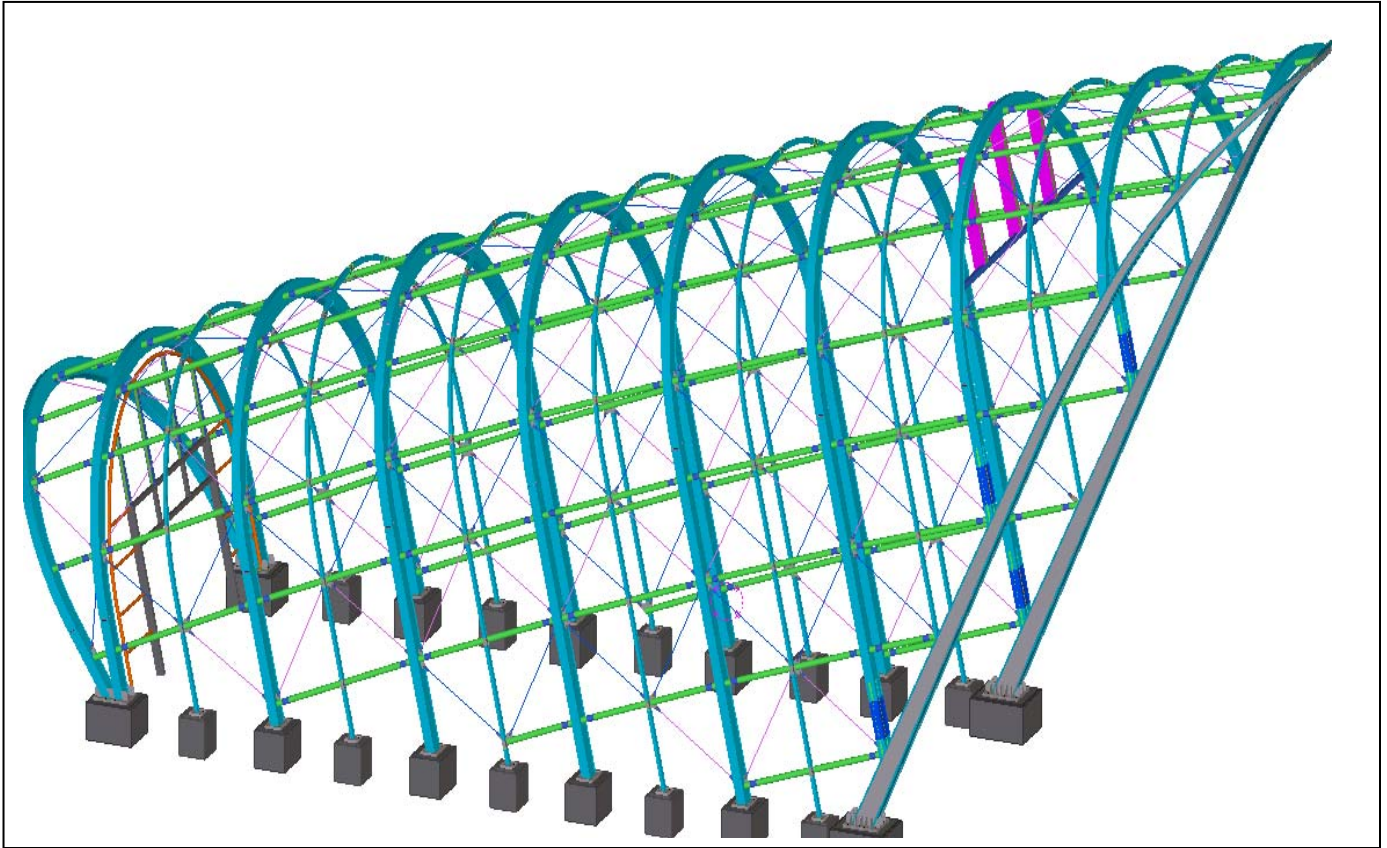




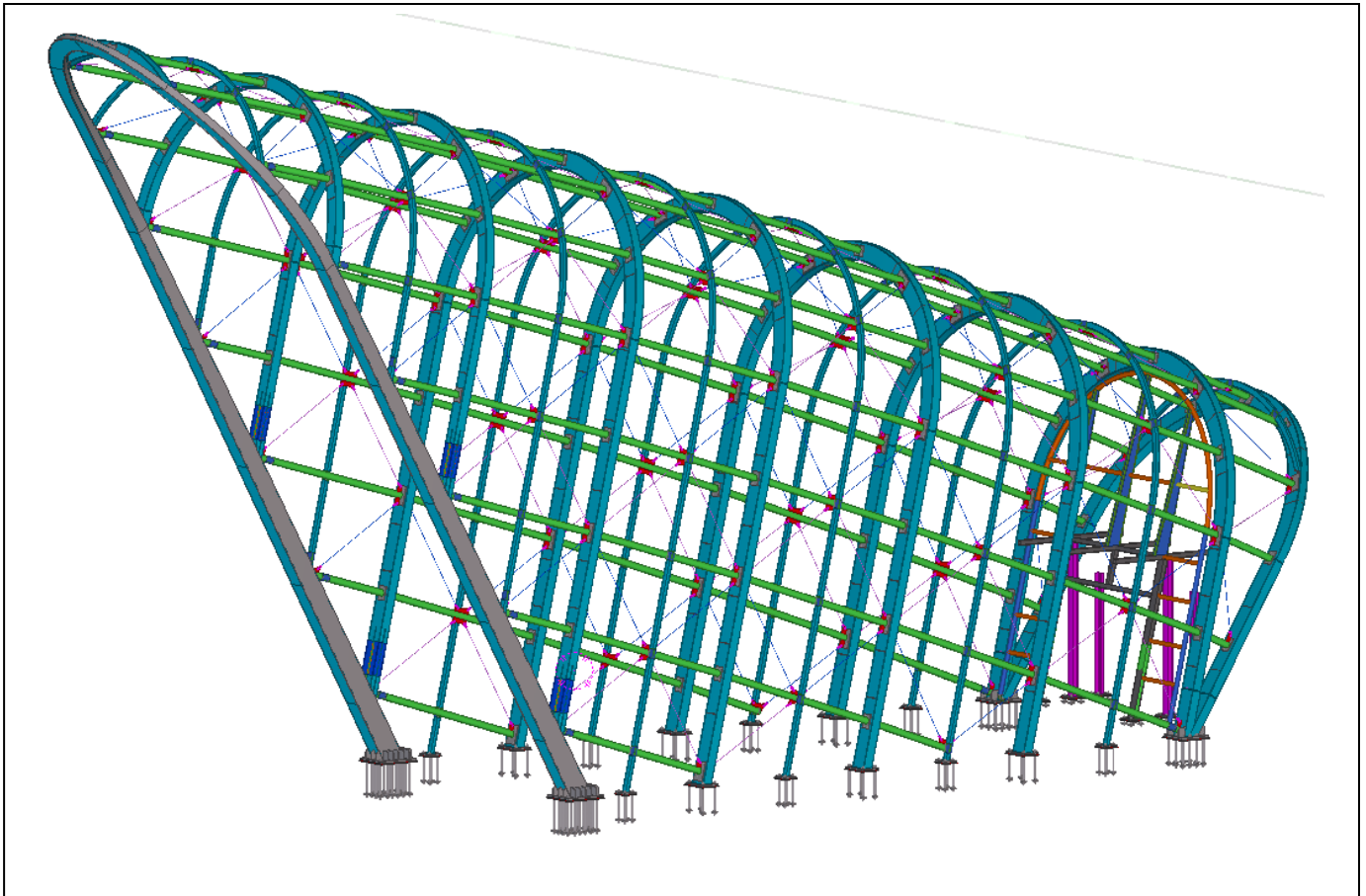


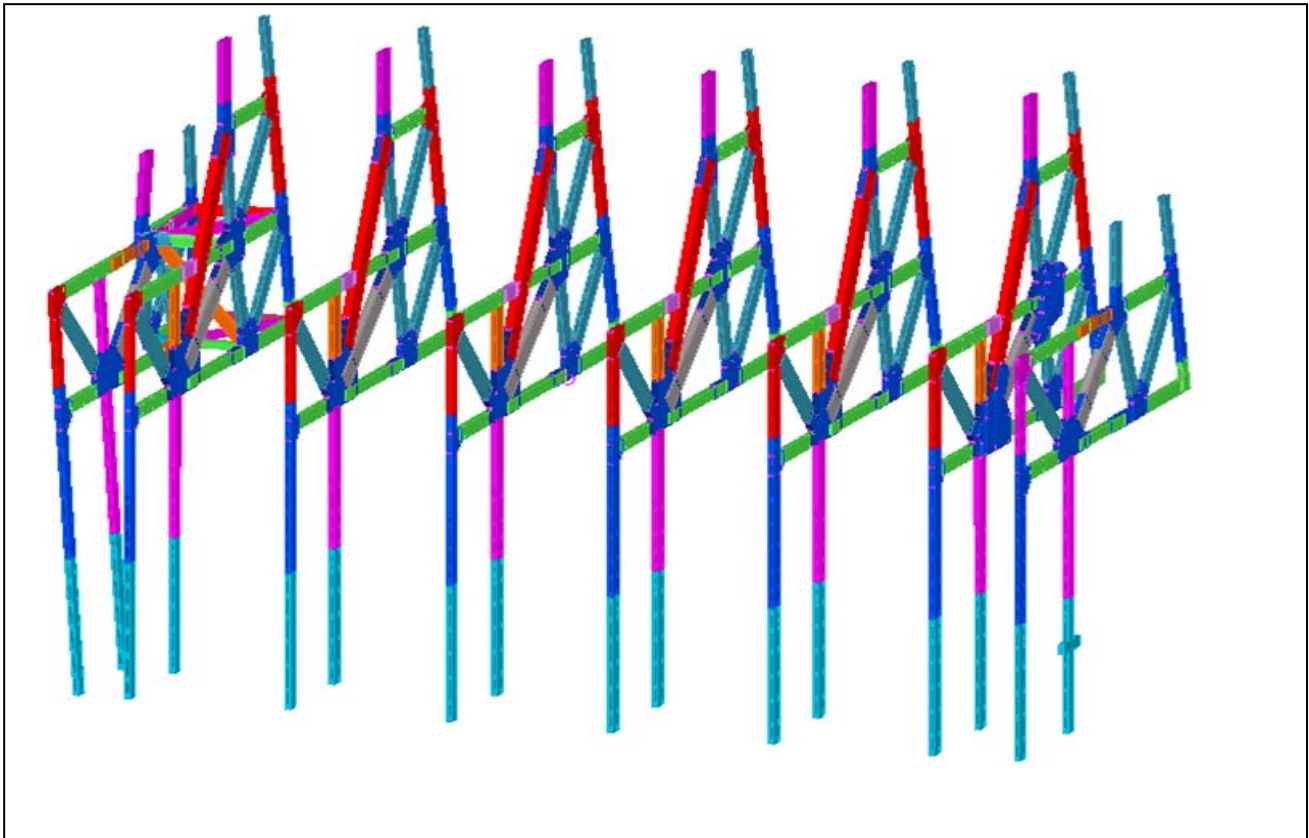
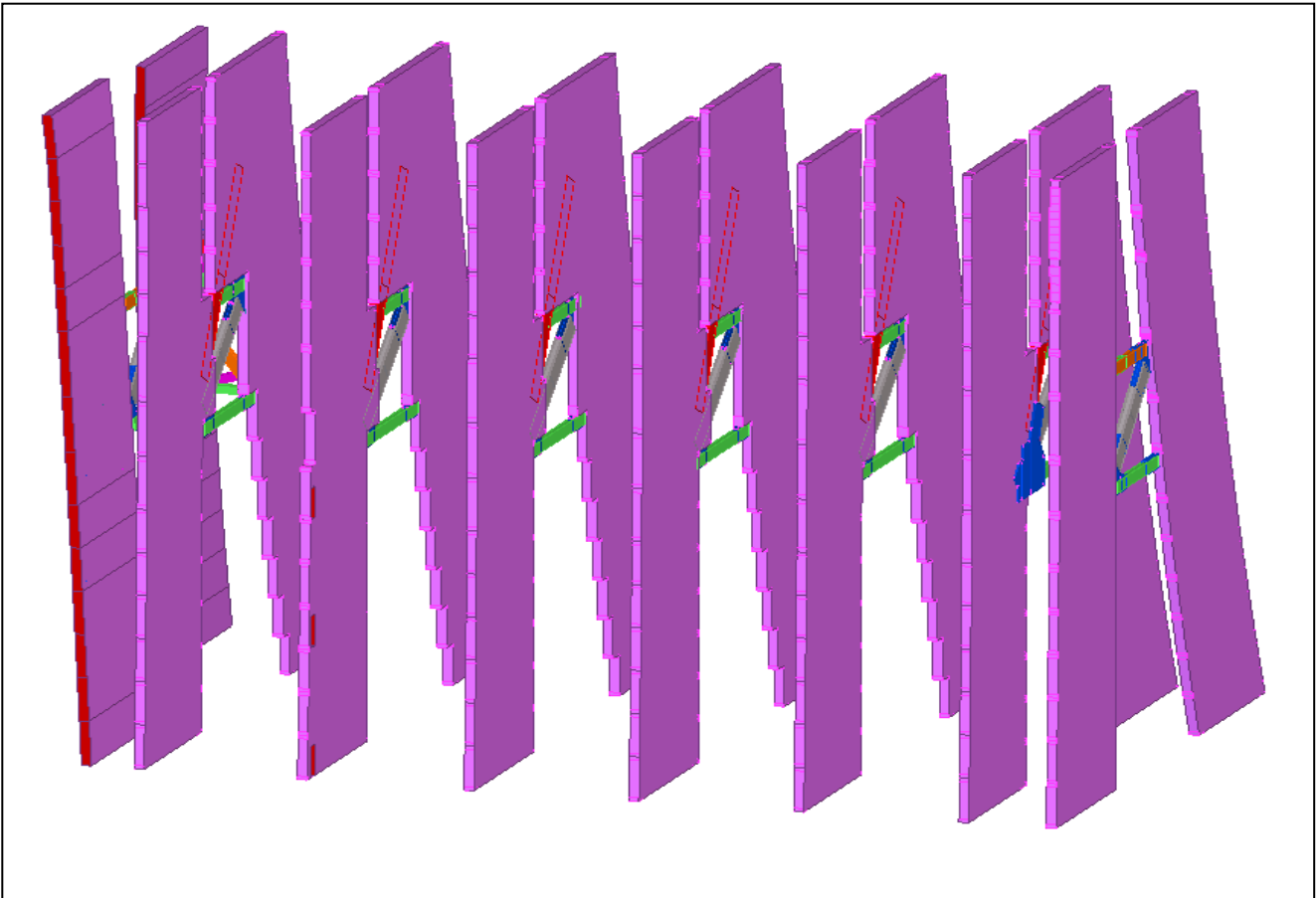


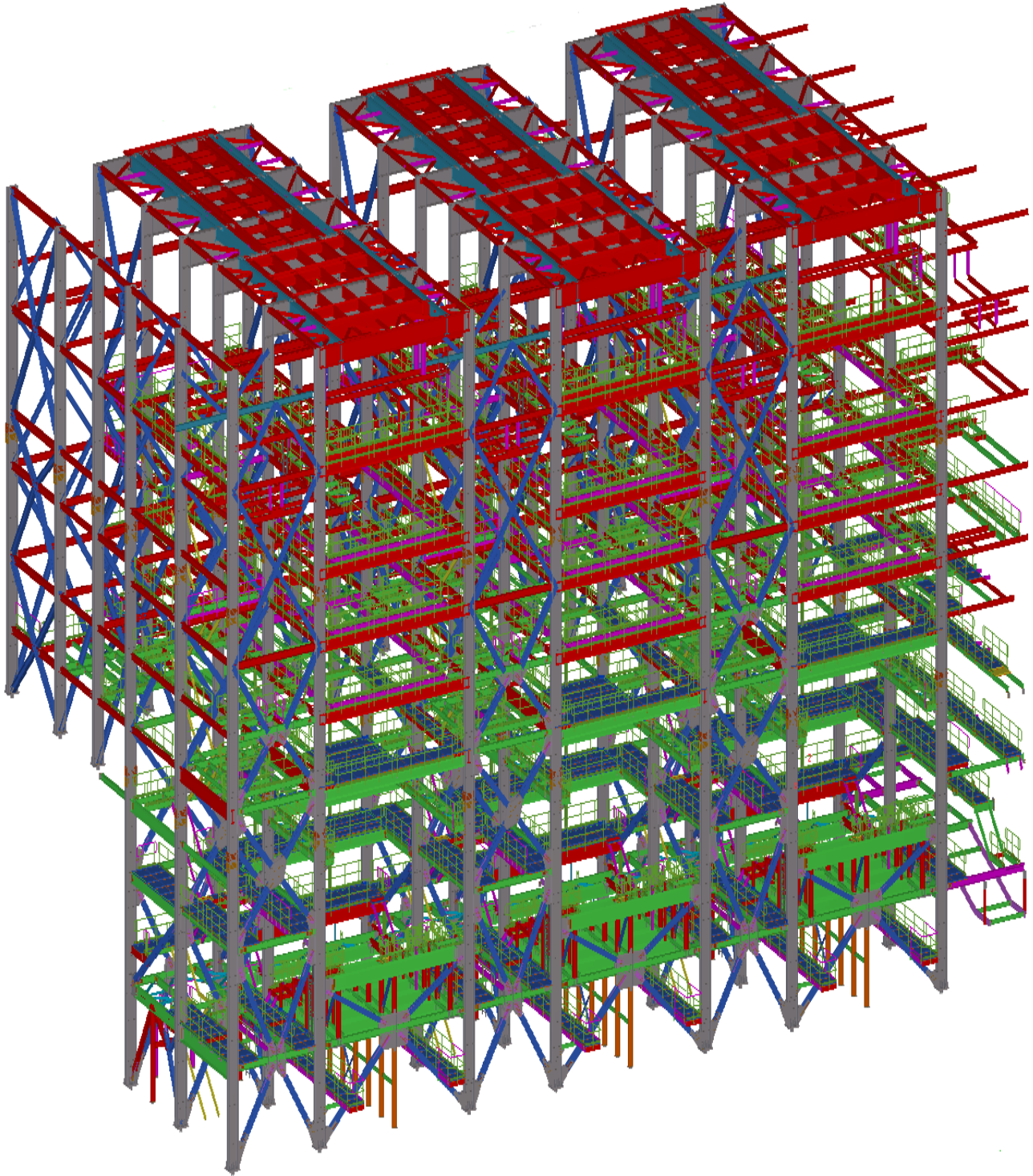
DUBAI METRO - ENTRANCE POD WIDE CANOPY - ATKINS

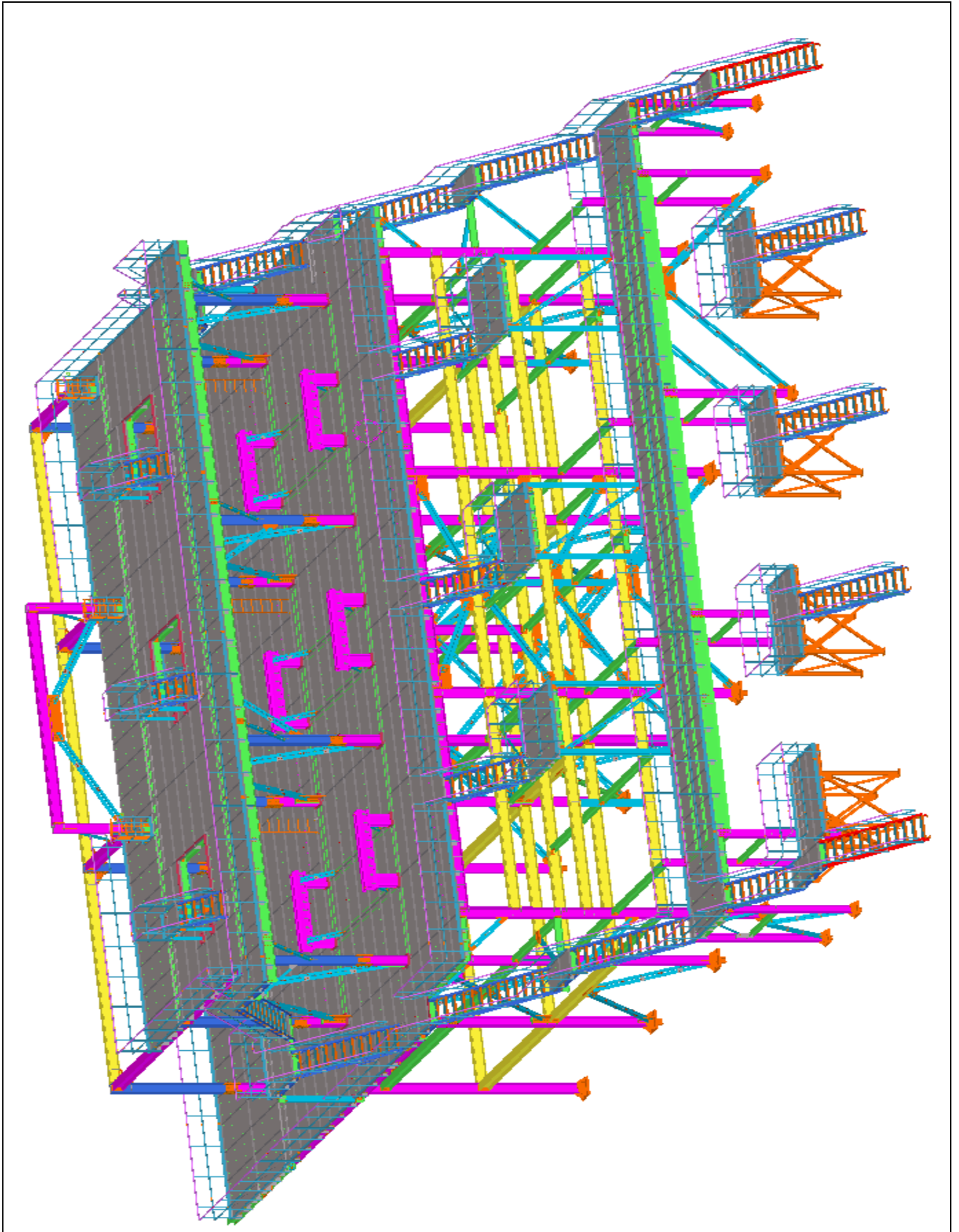


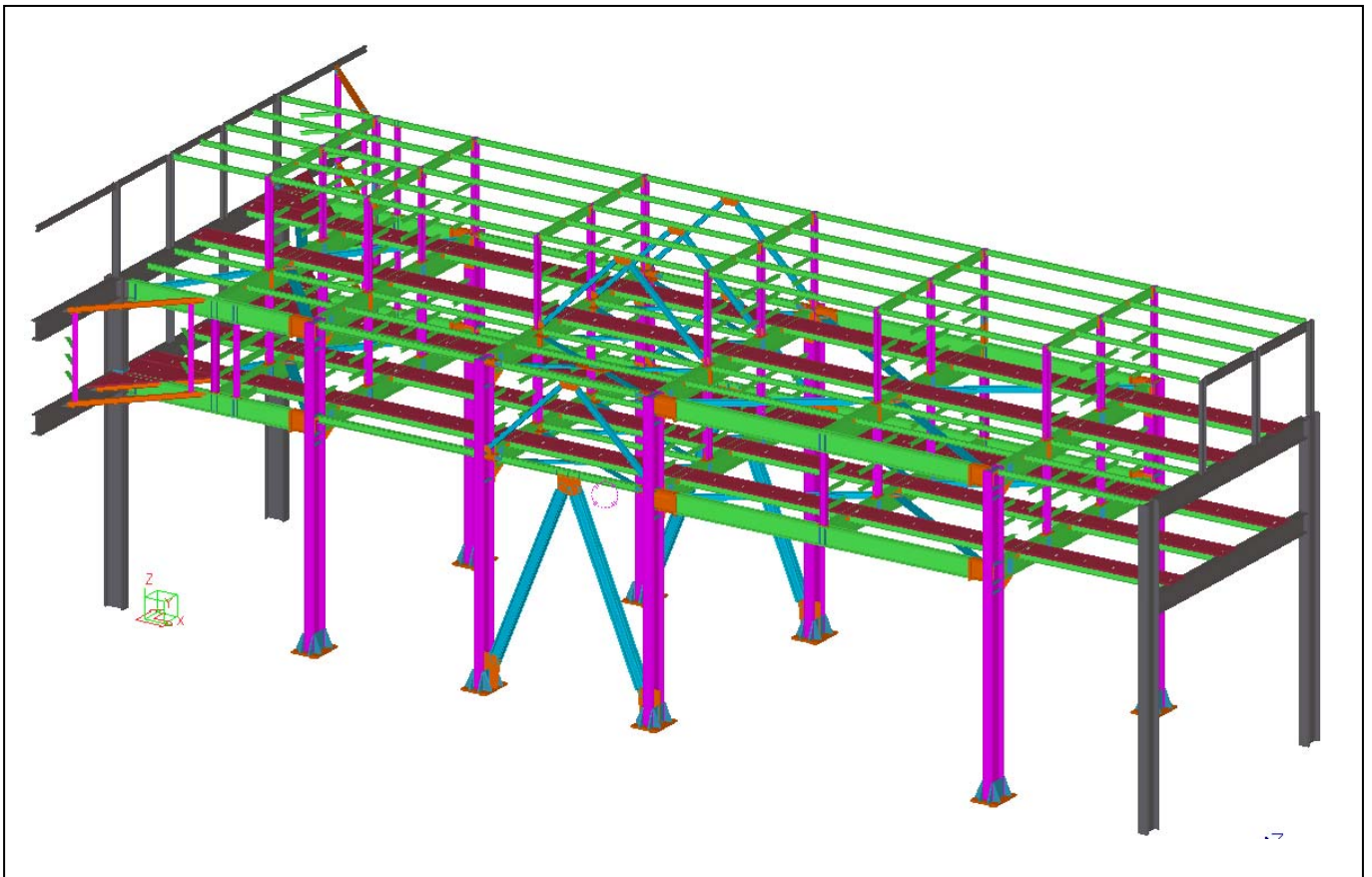
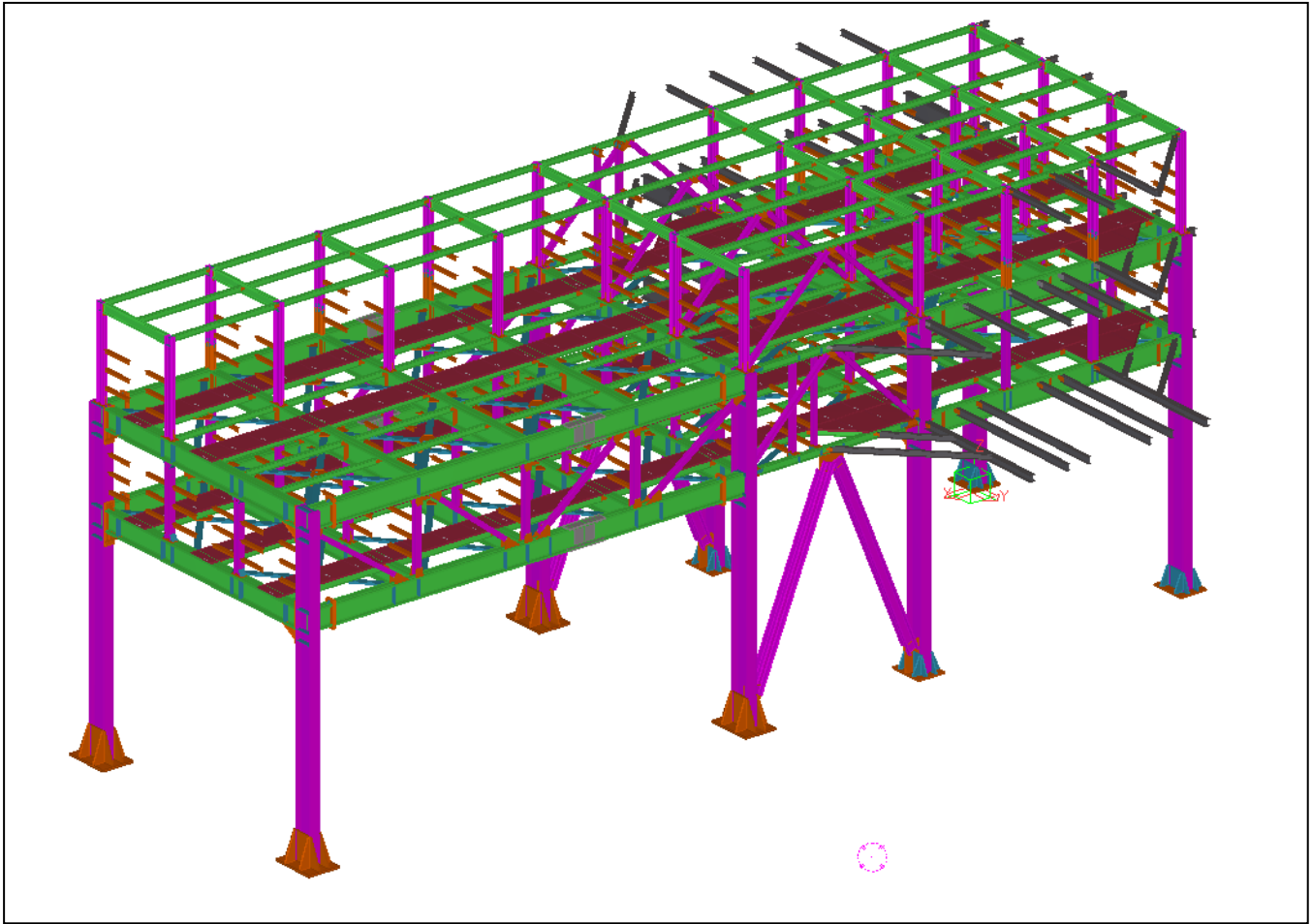
DUBAI METRO - ENTRANCE POD NARROW CANOPY - ATKINS

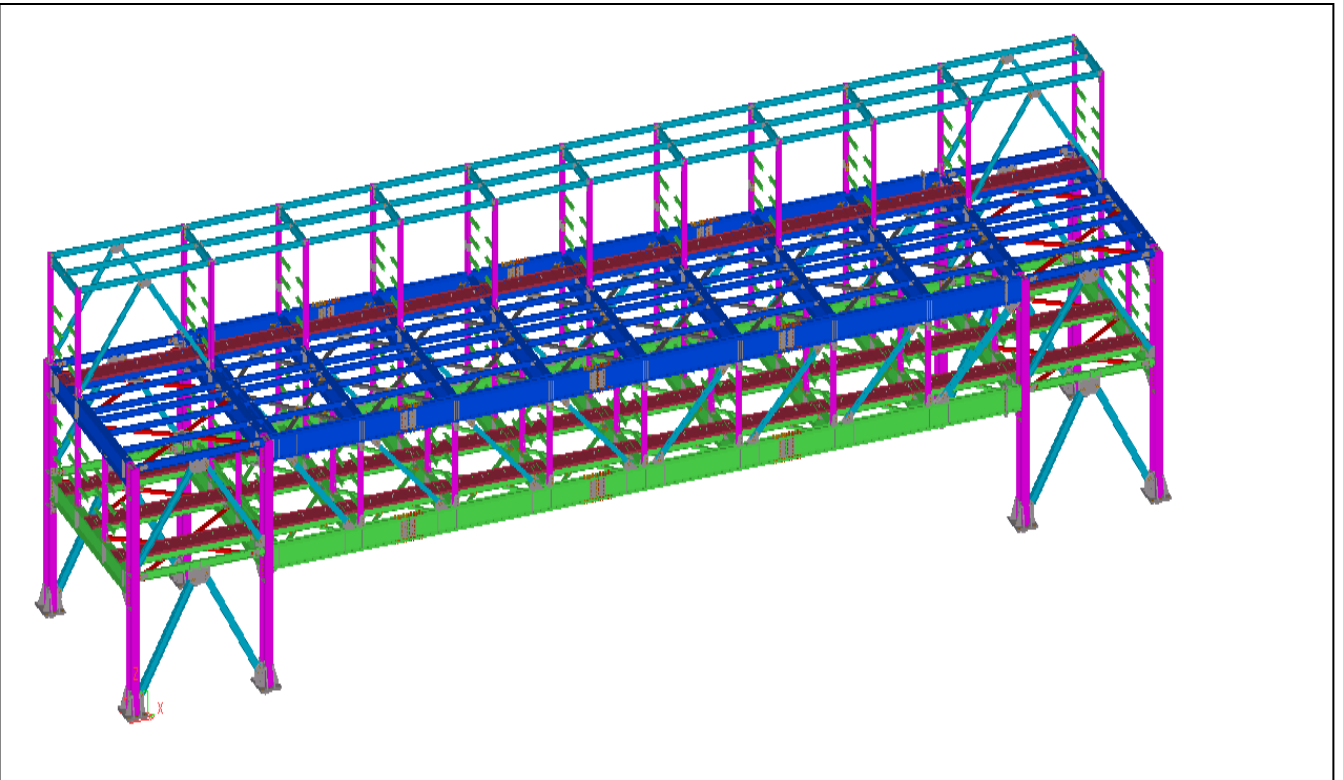
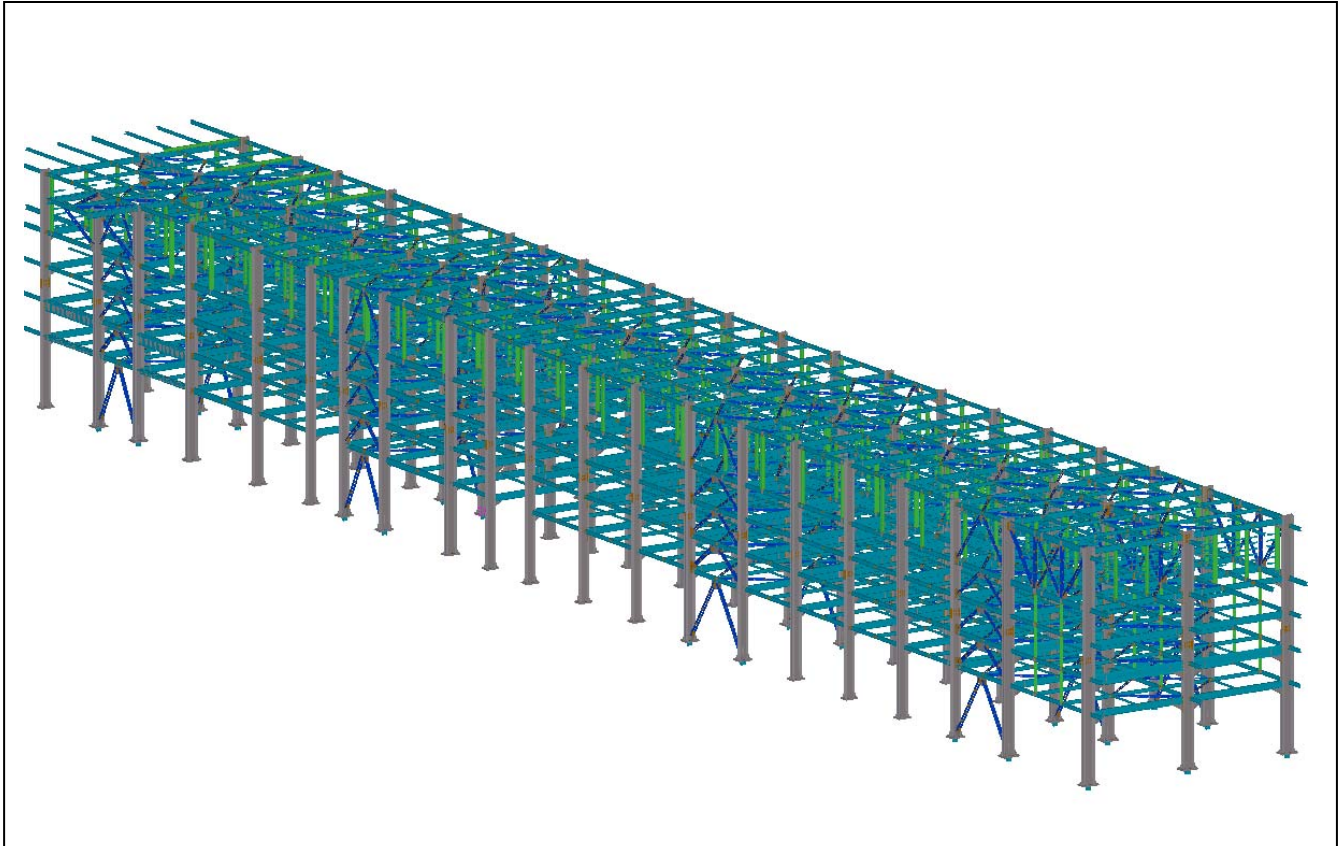


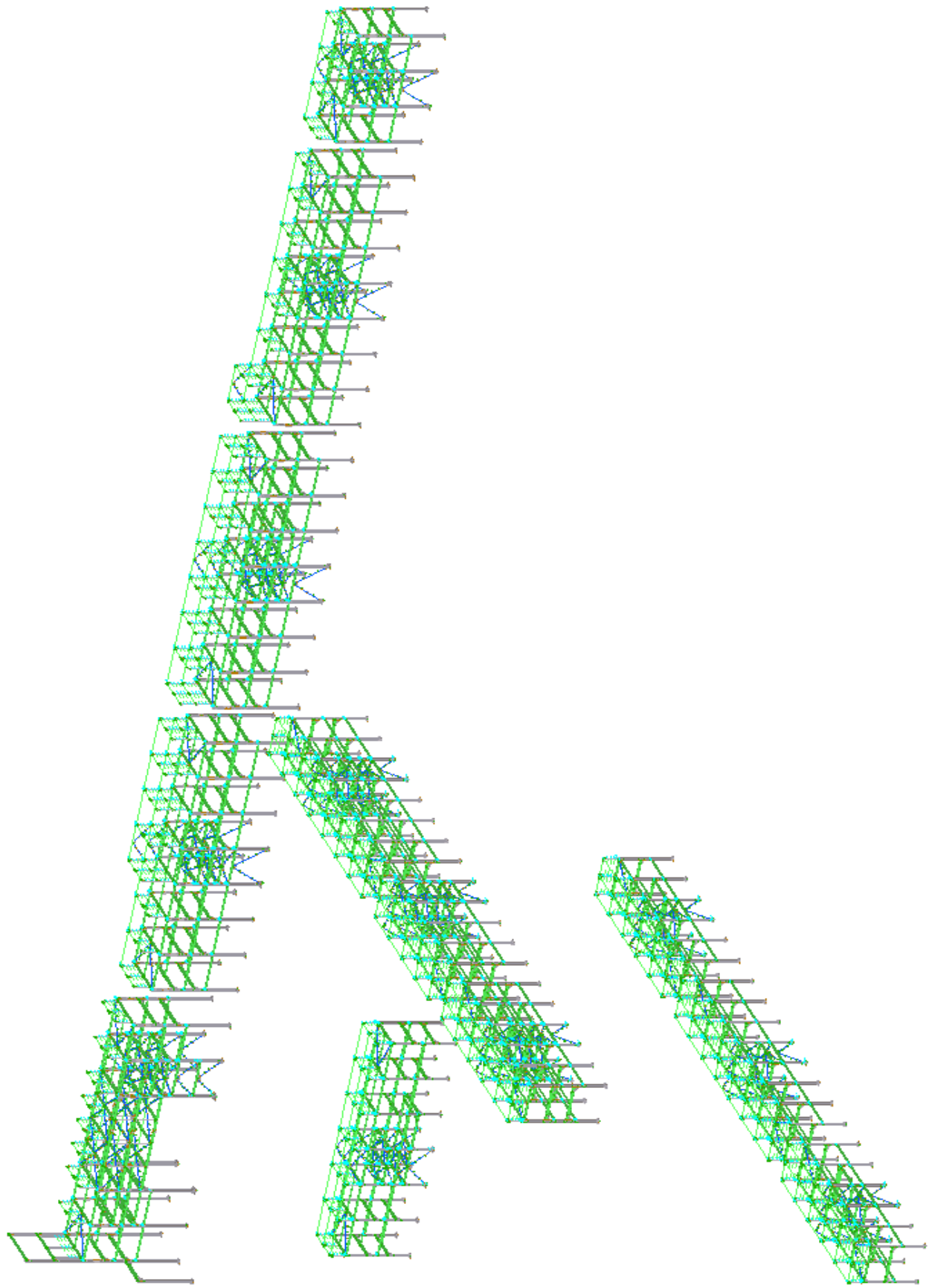


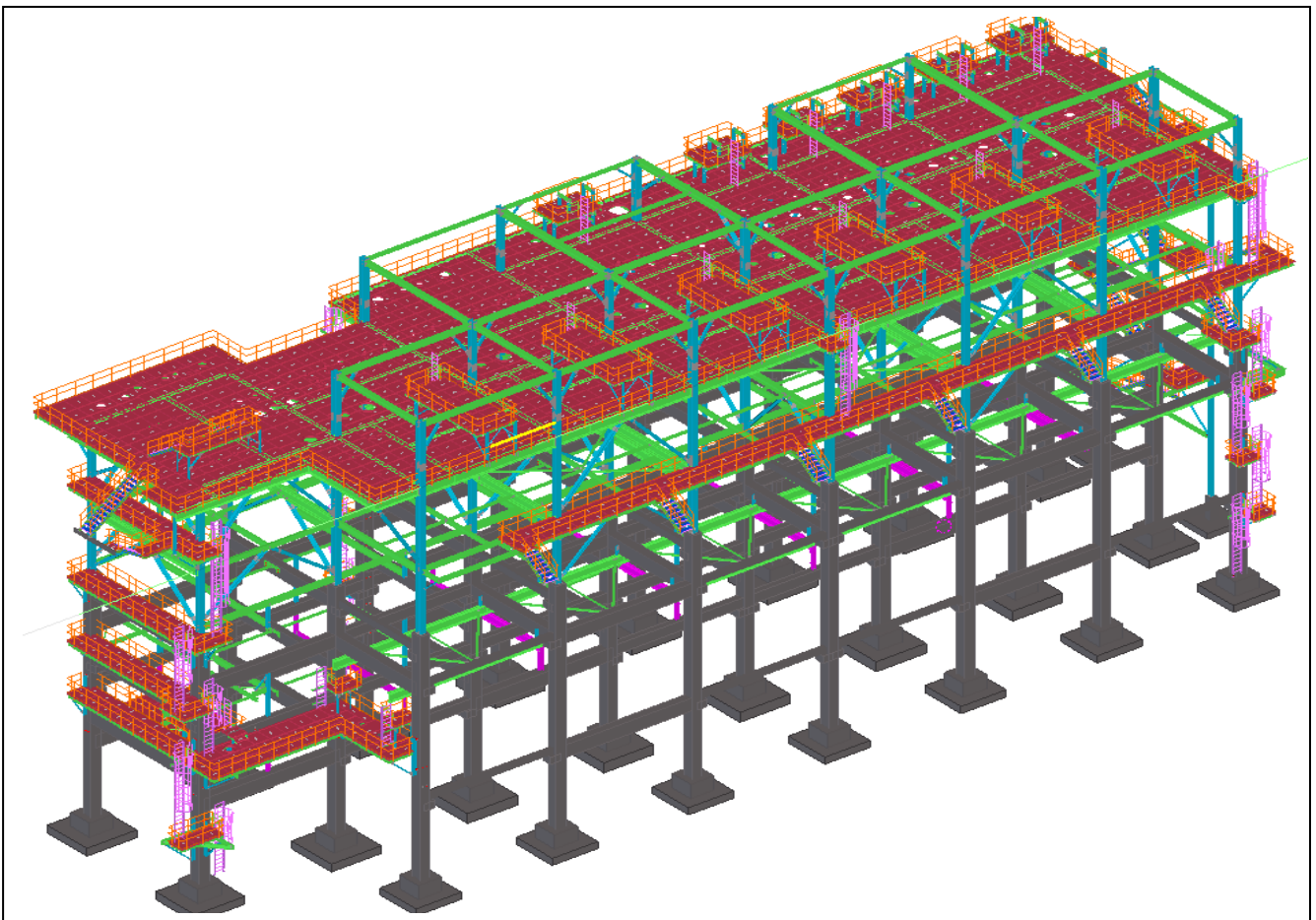
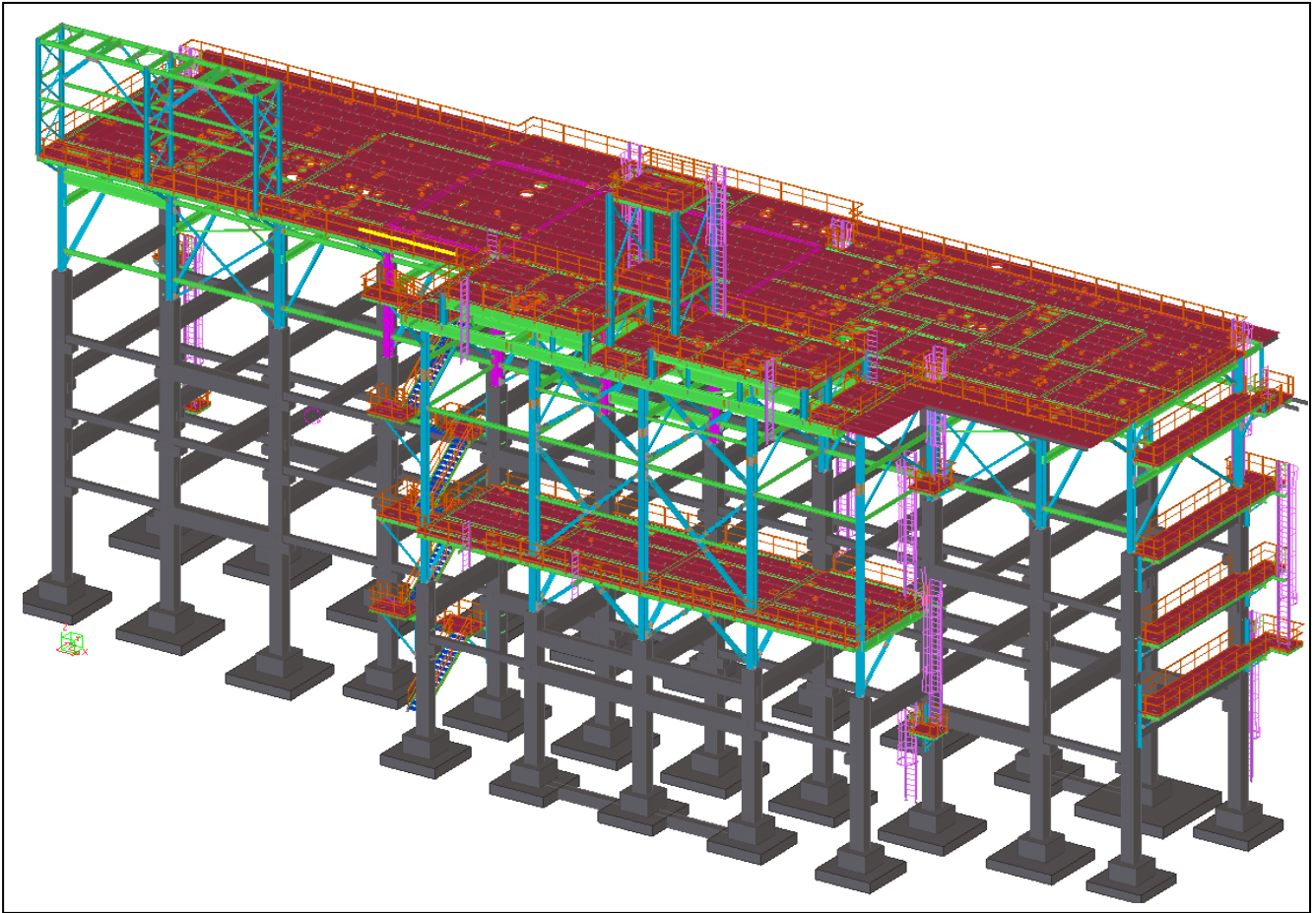


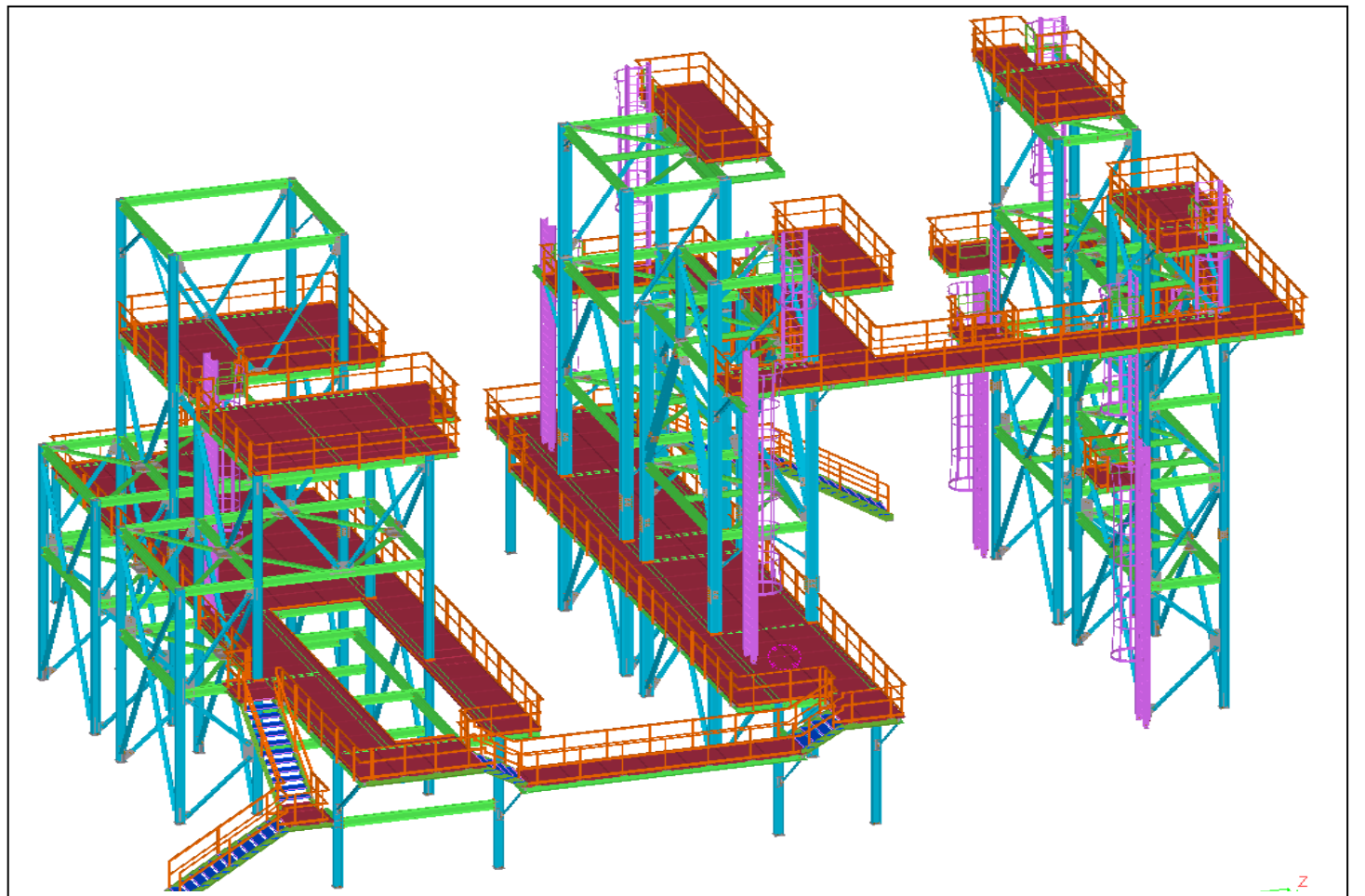
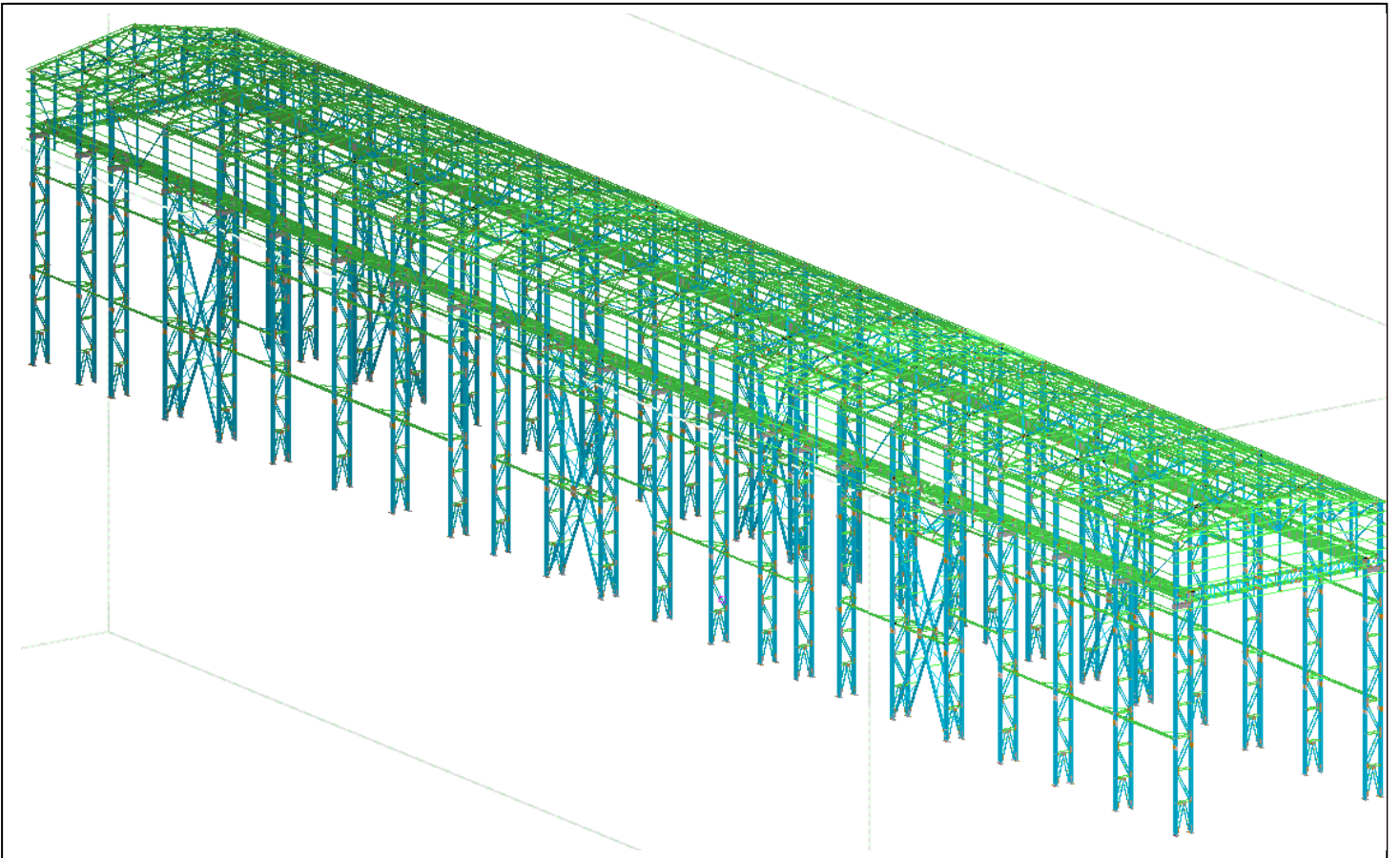


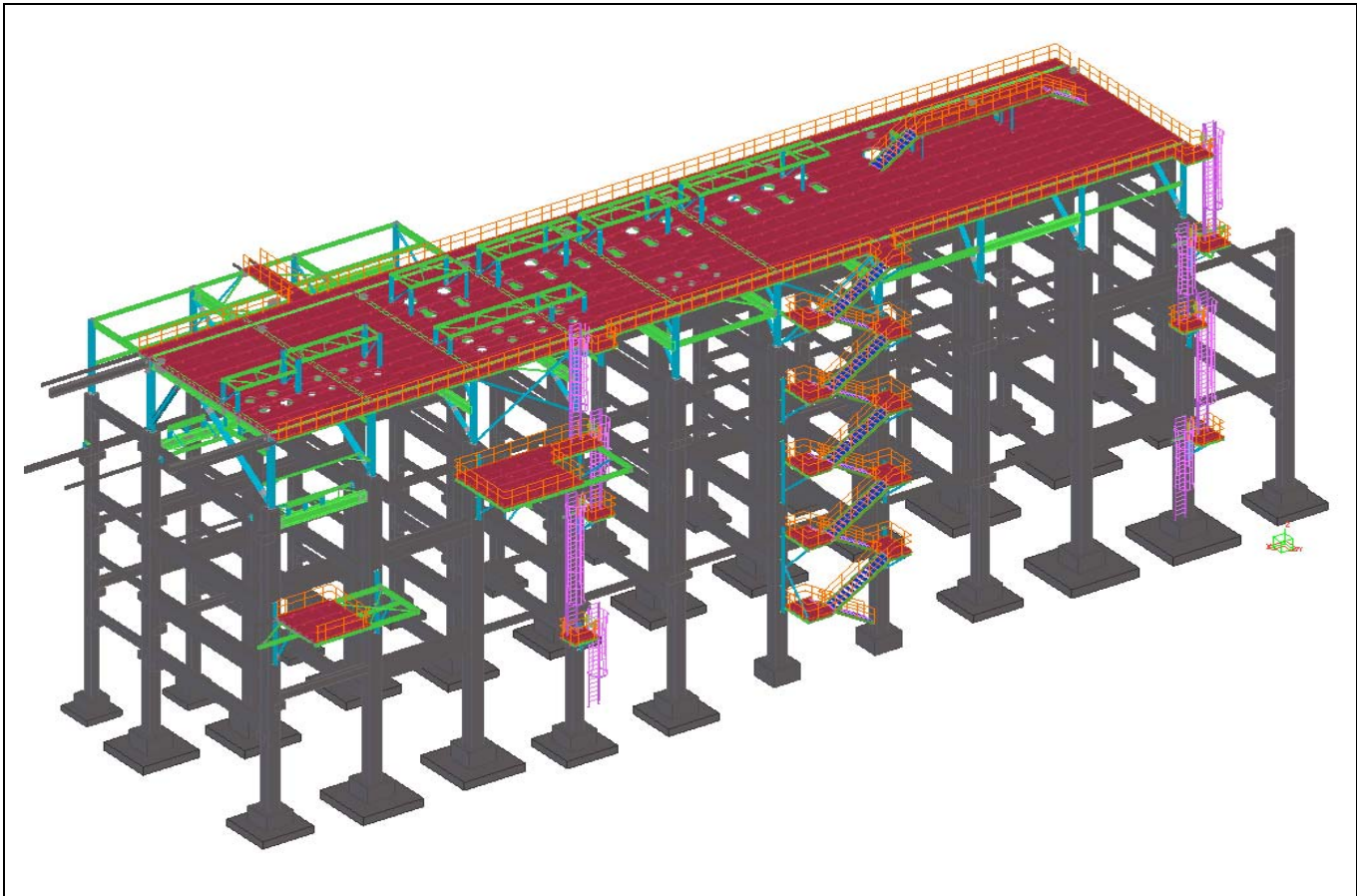
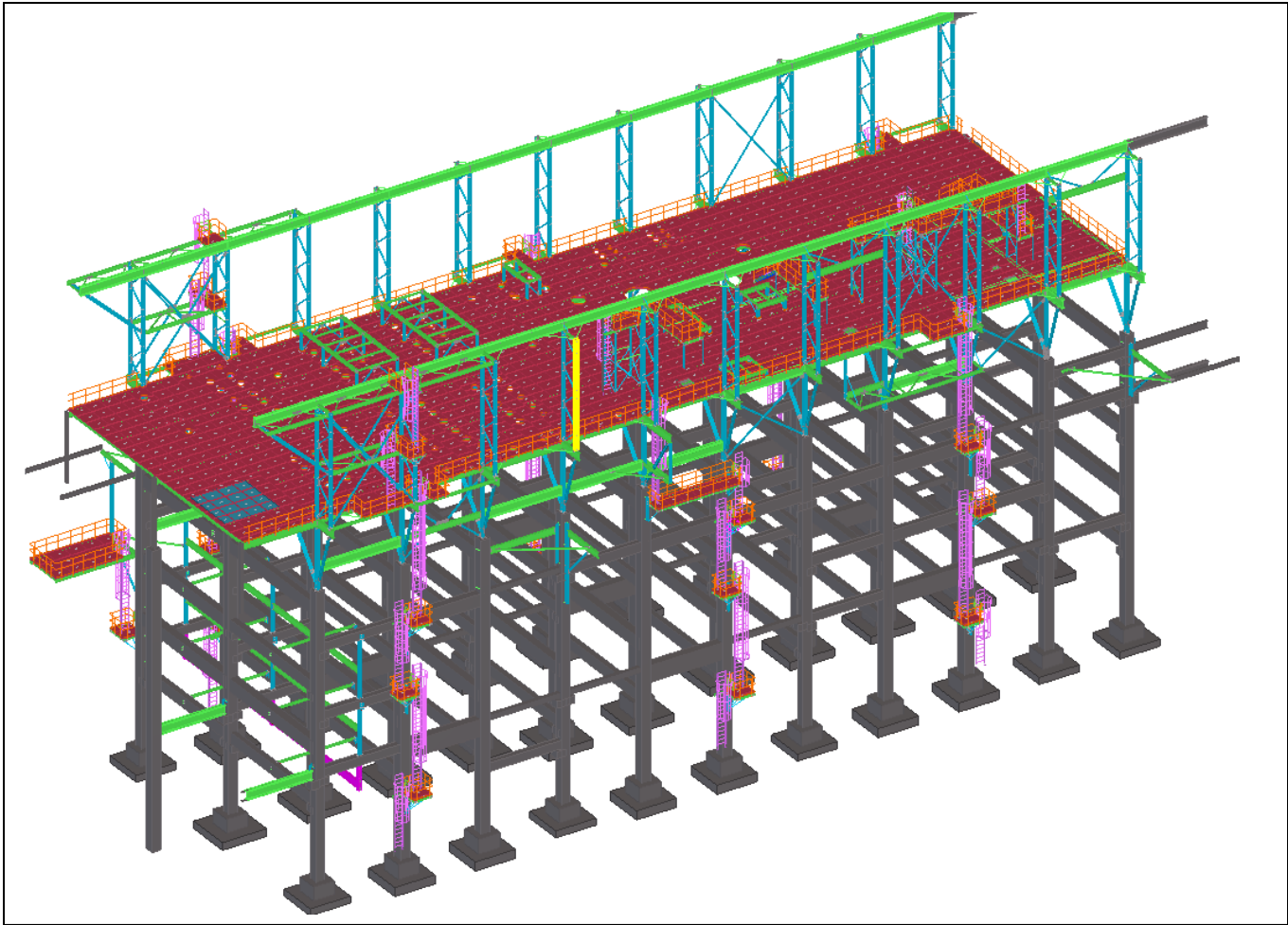


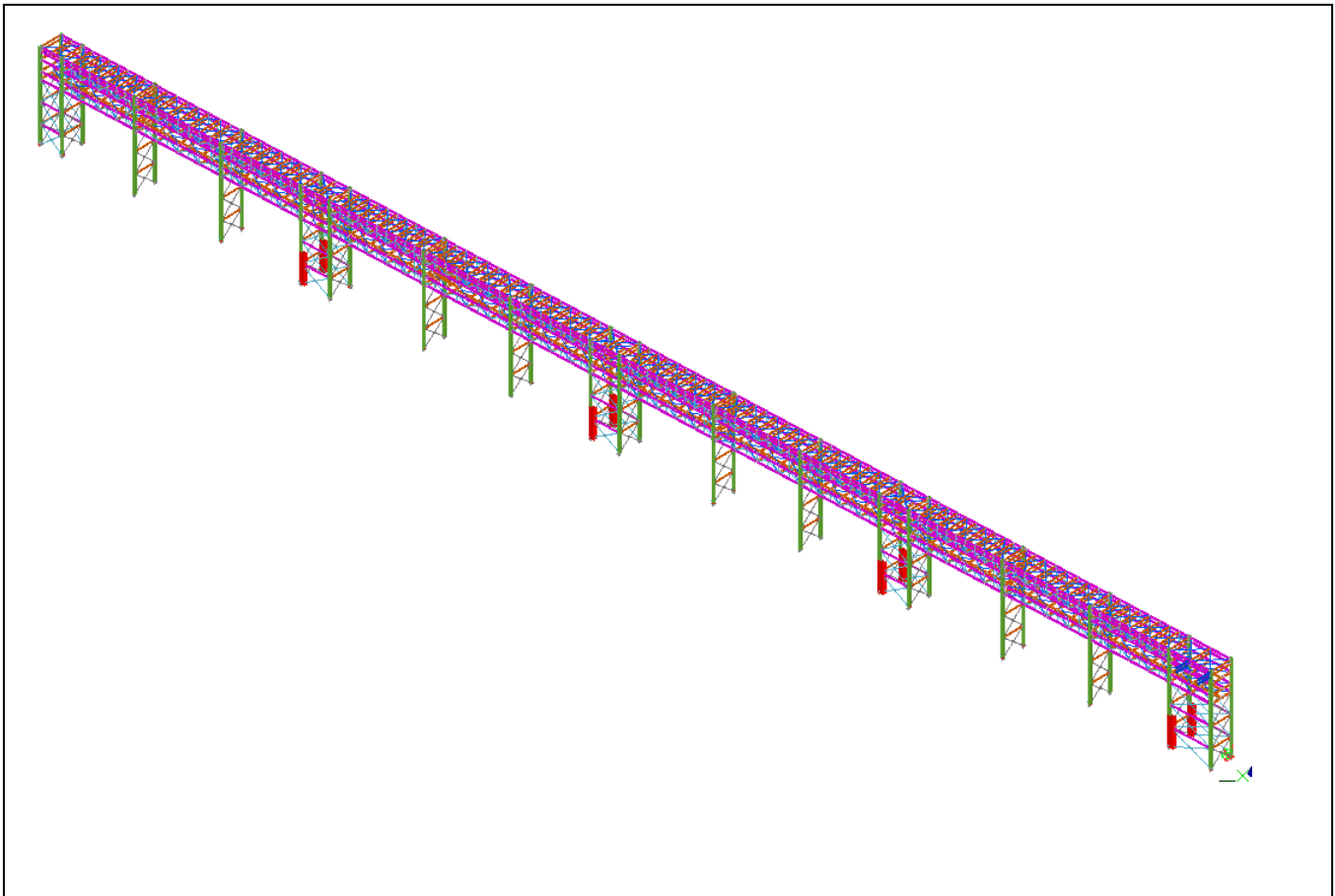
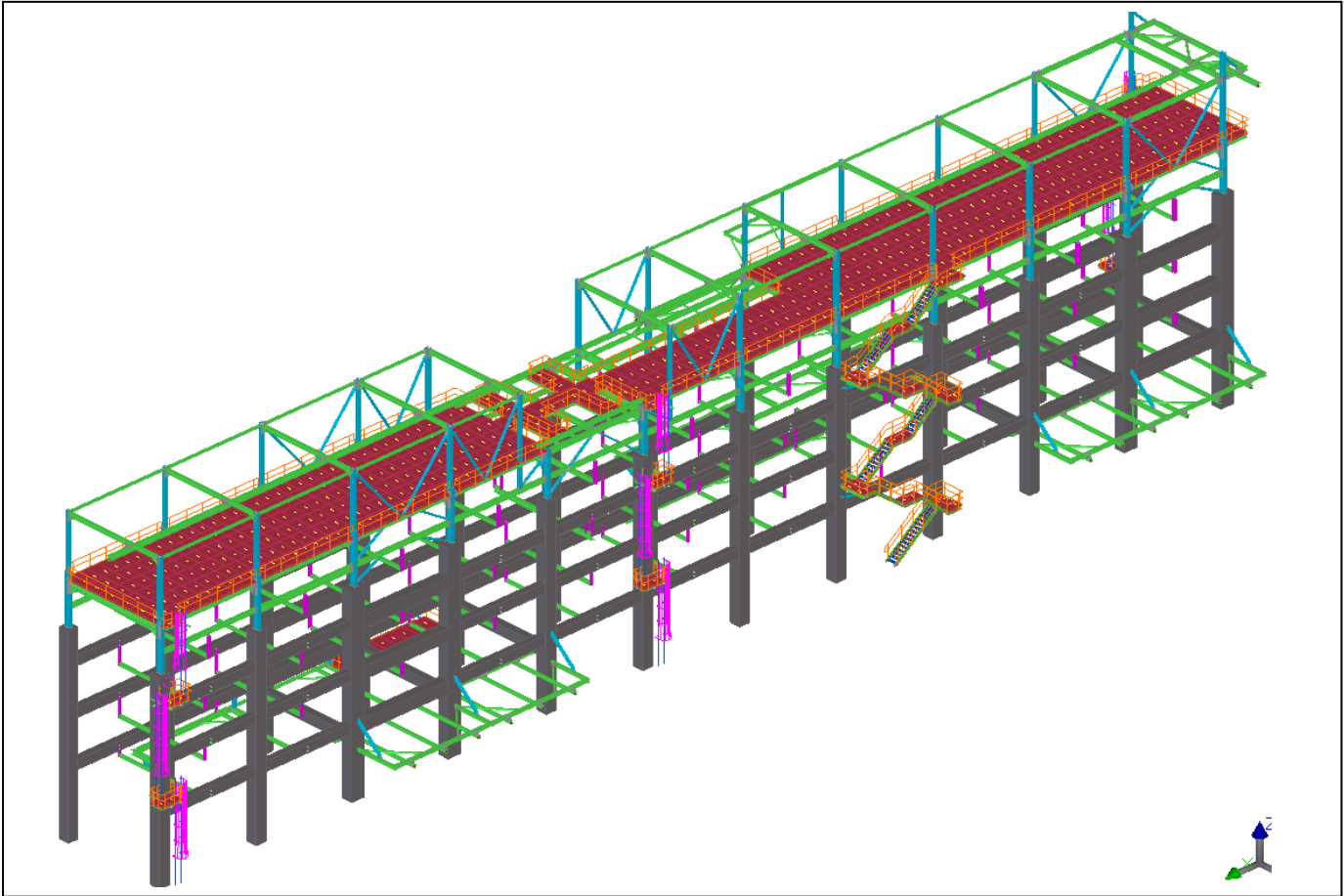


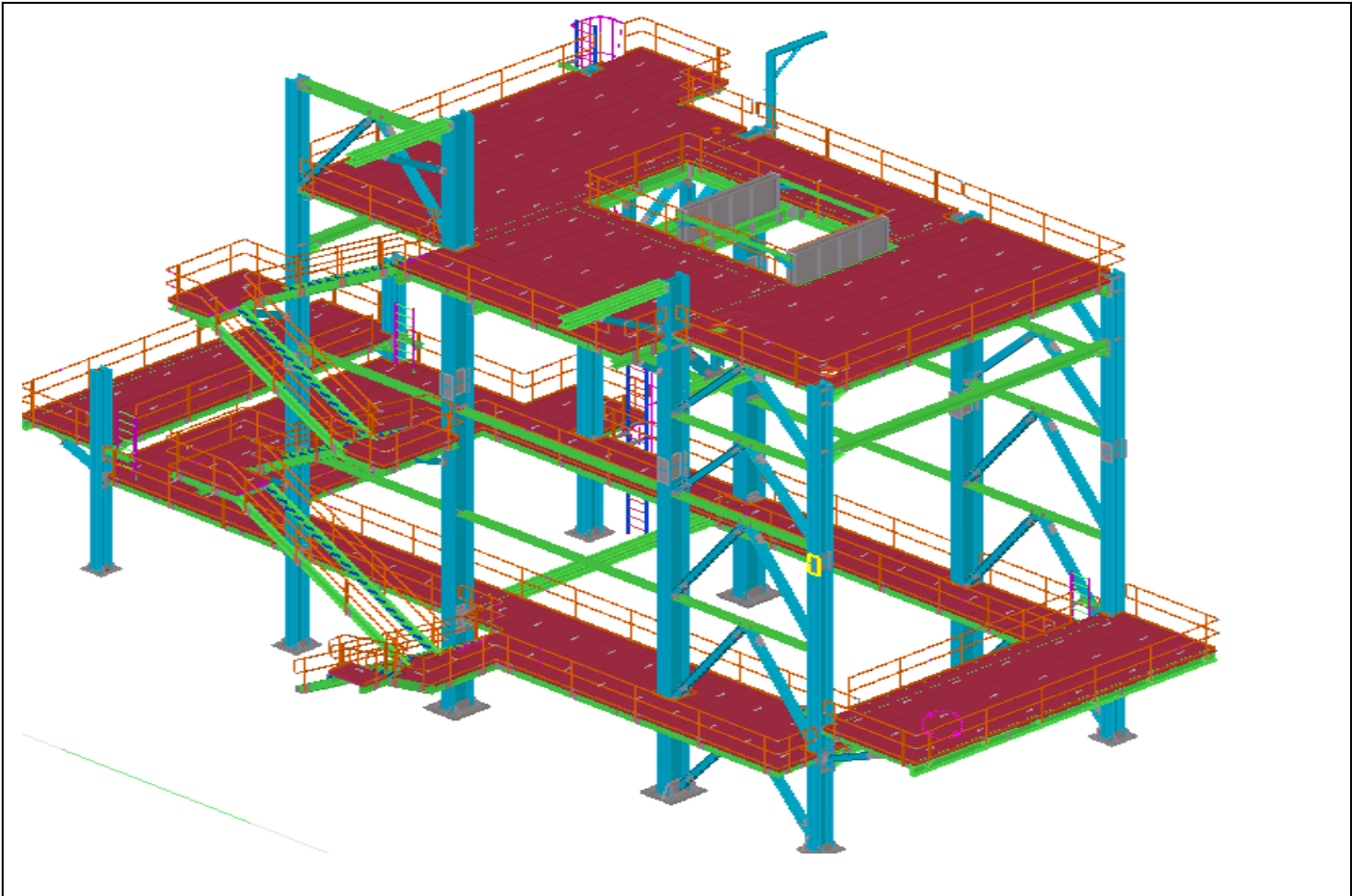
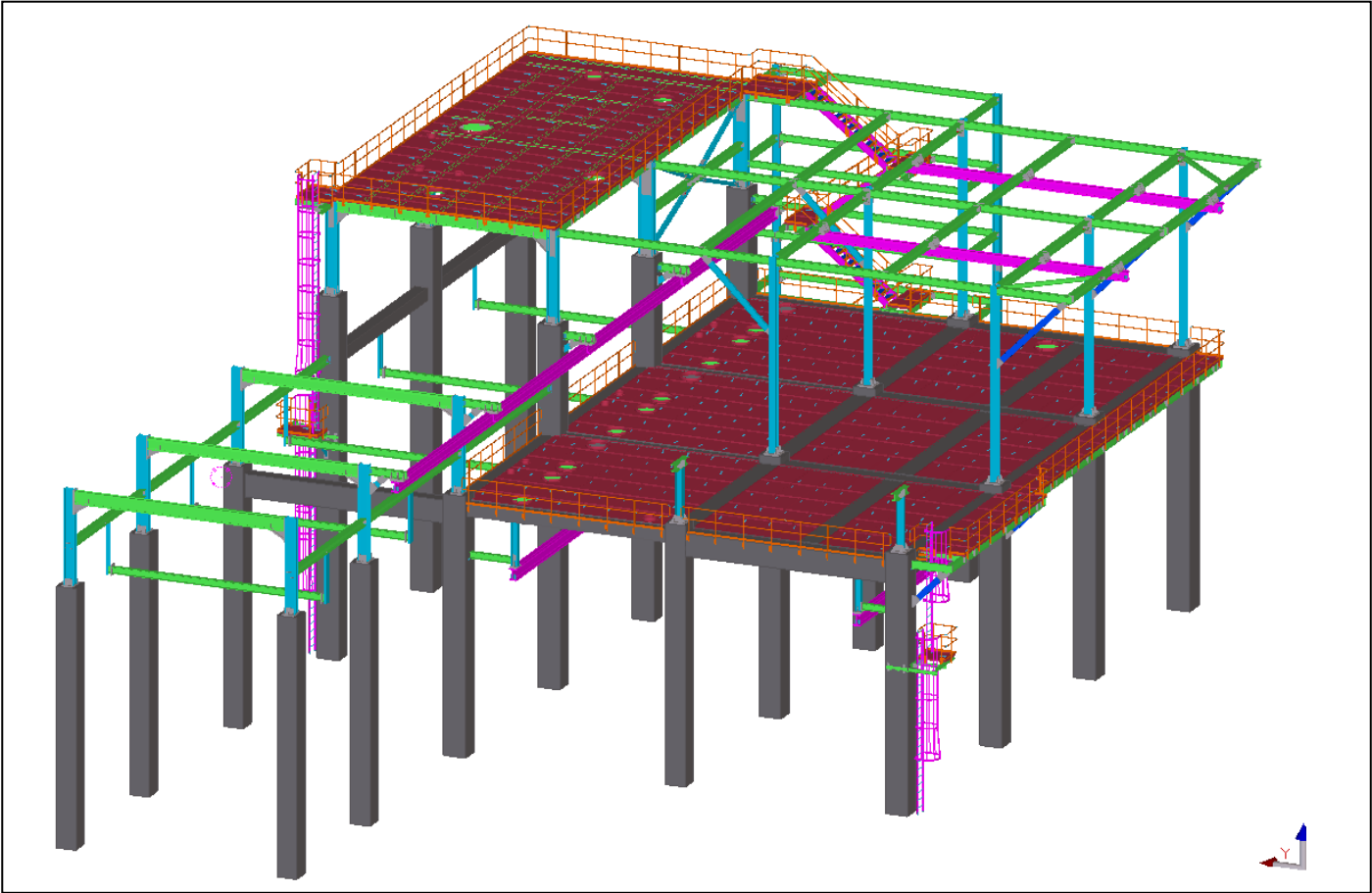


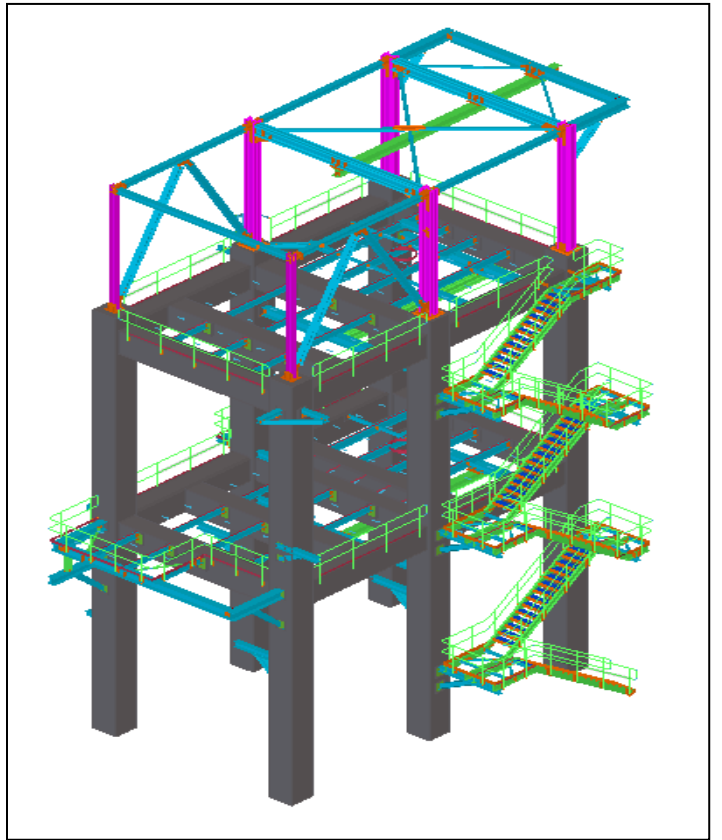
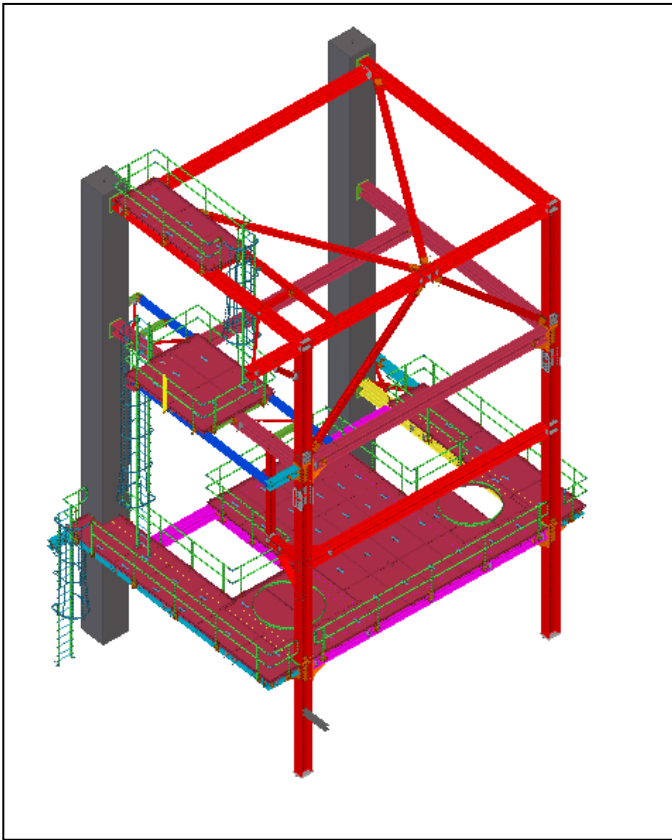




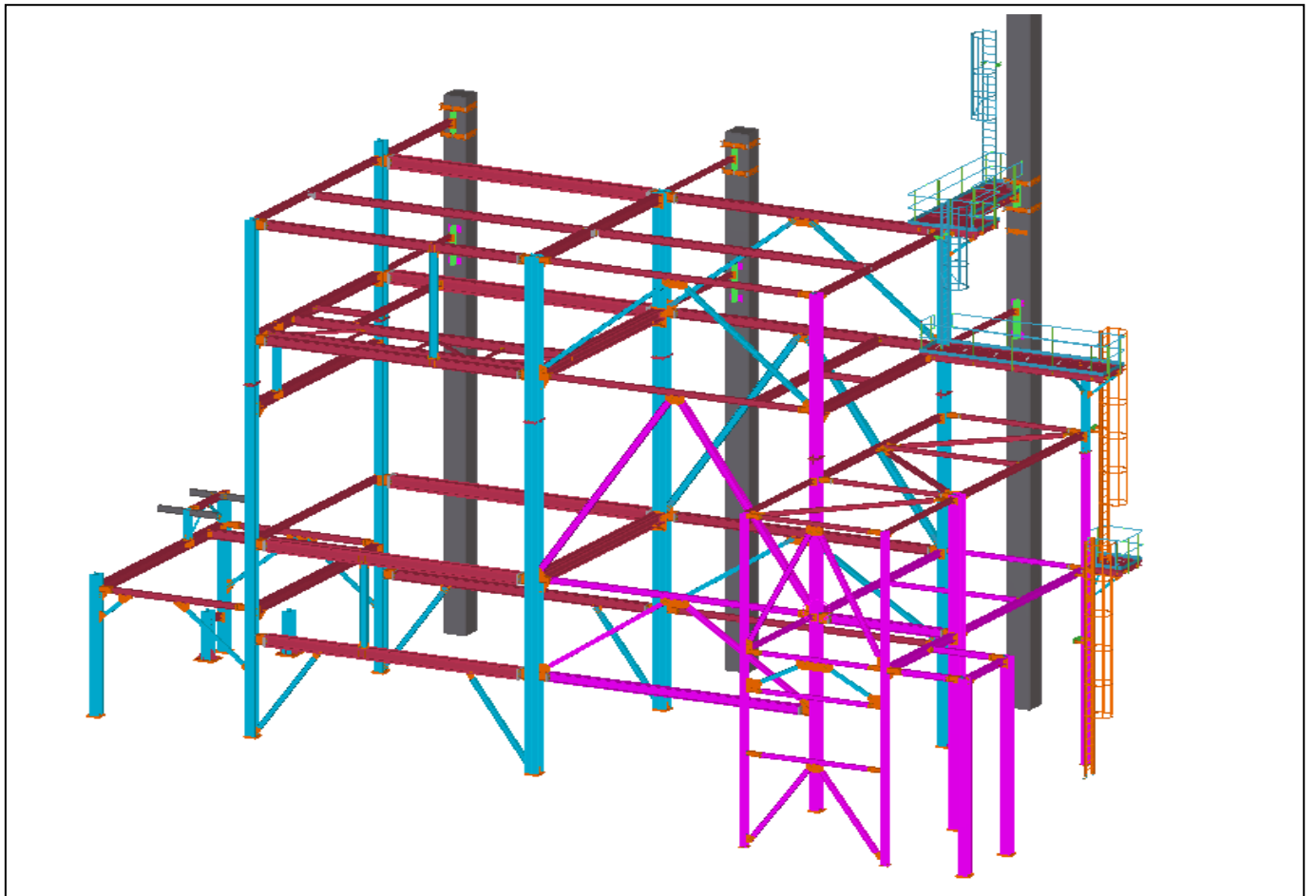


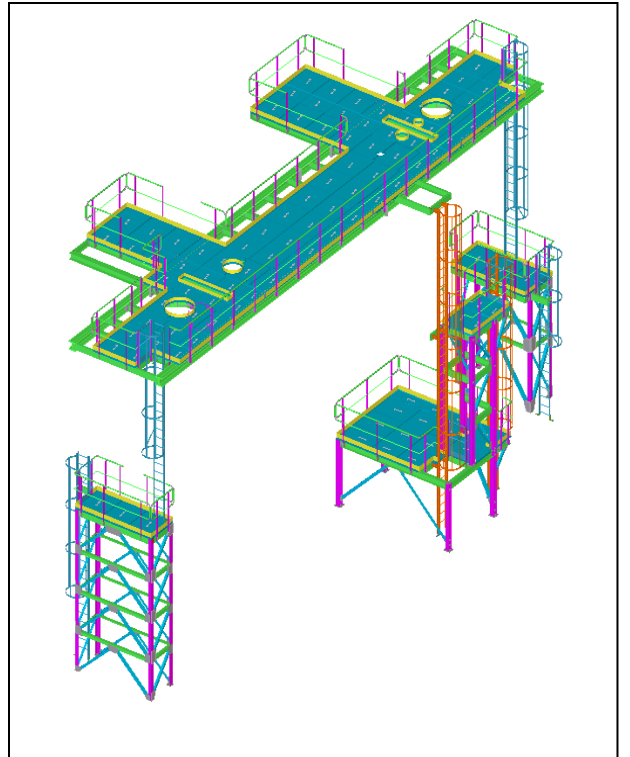
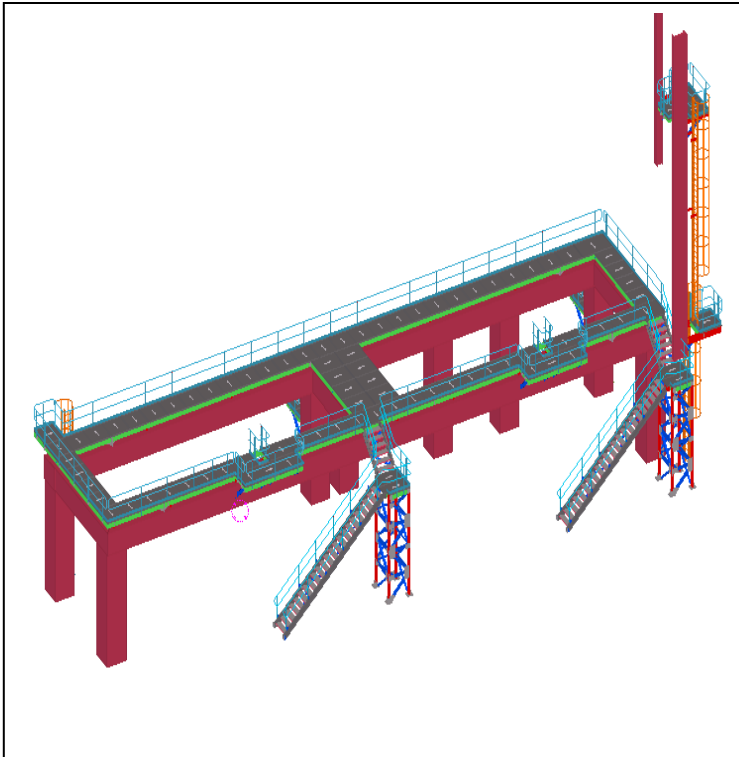
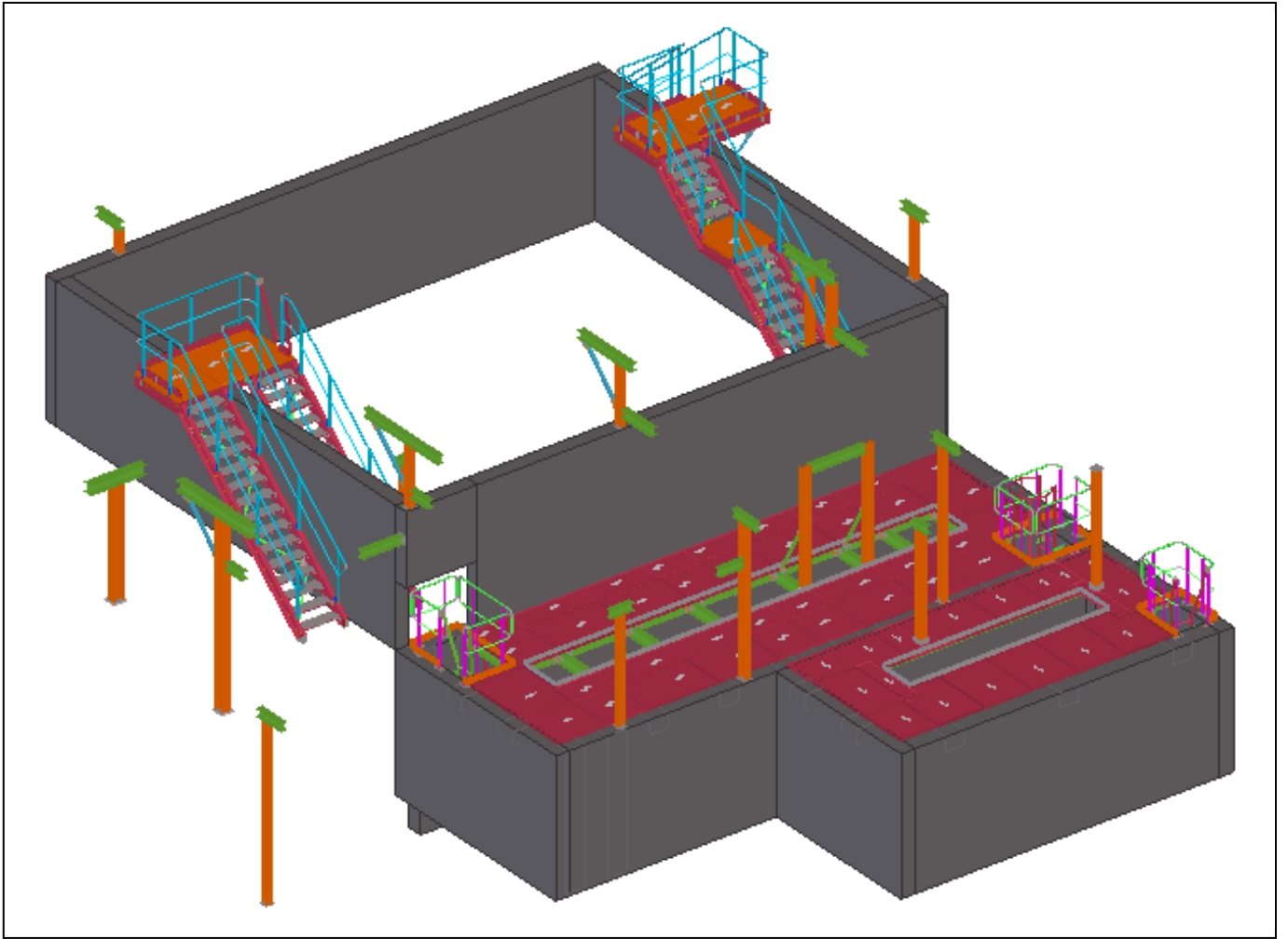


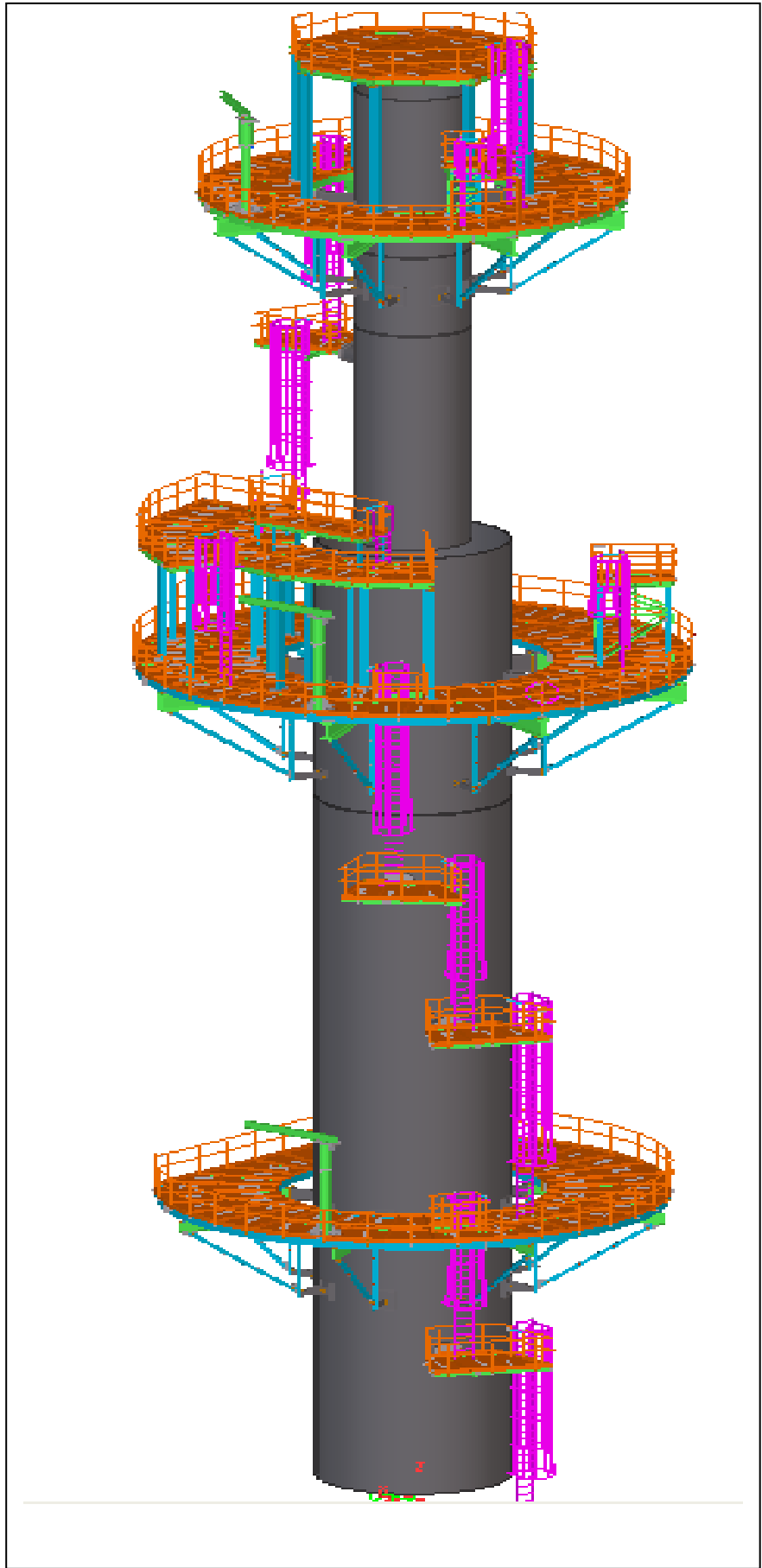




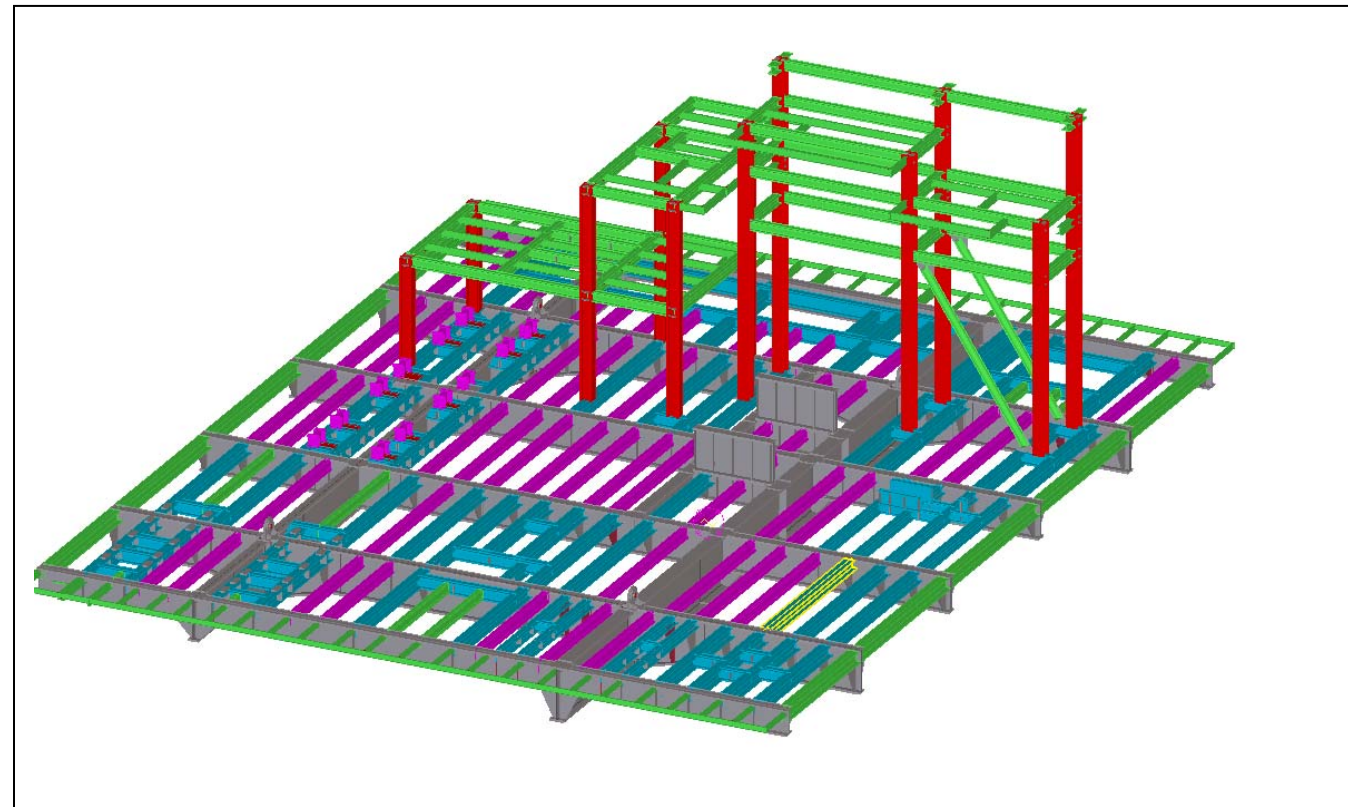
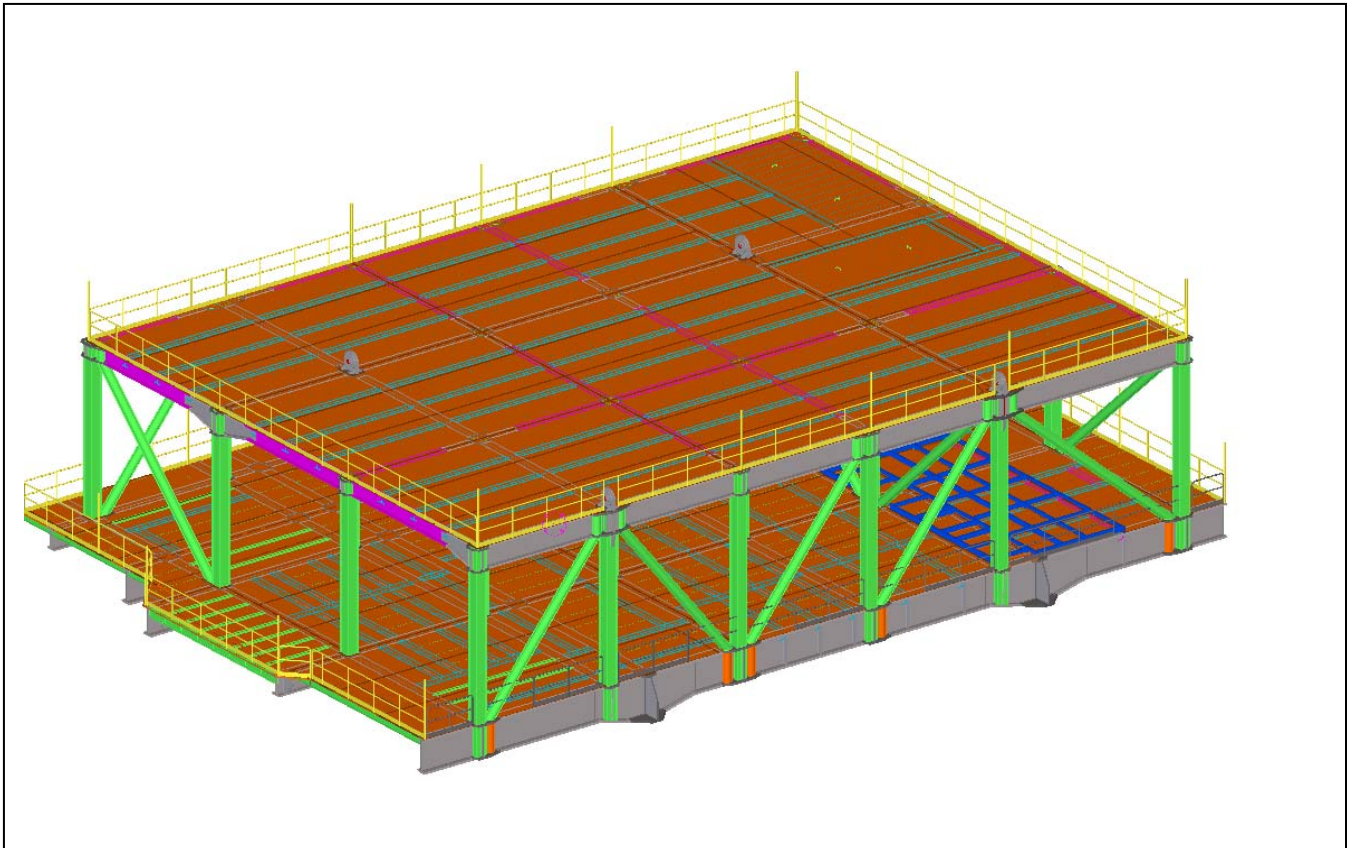
YEMEN LNG - TECHNIP ITALY

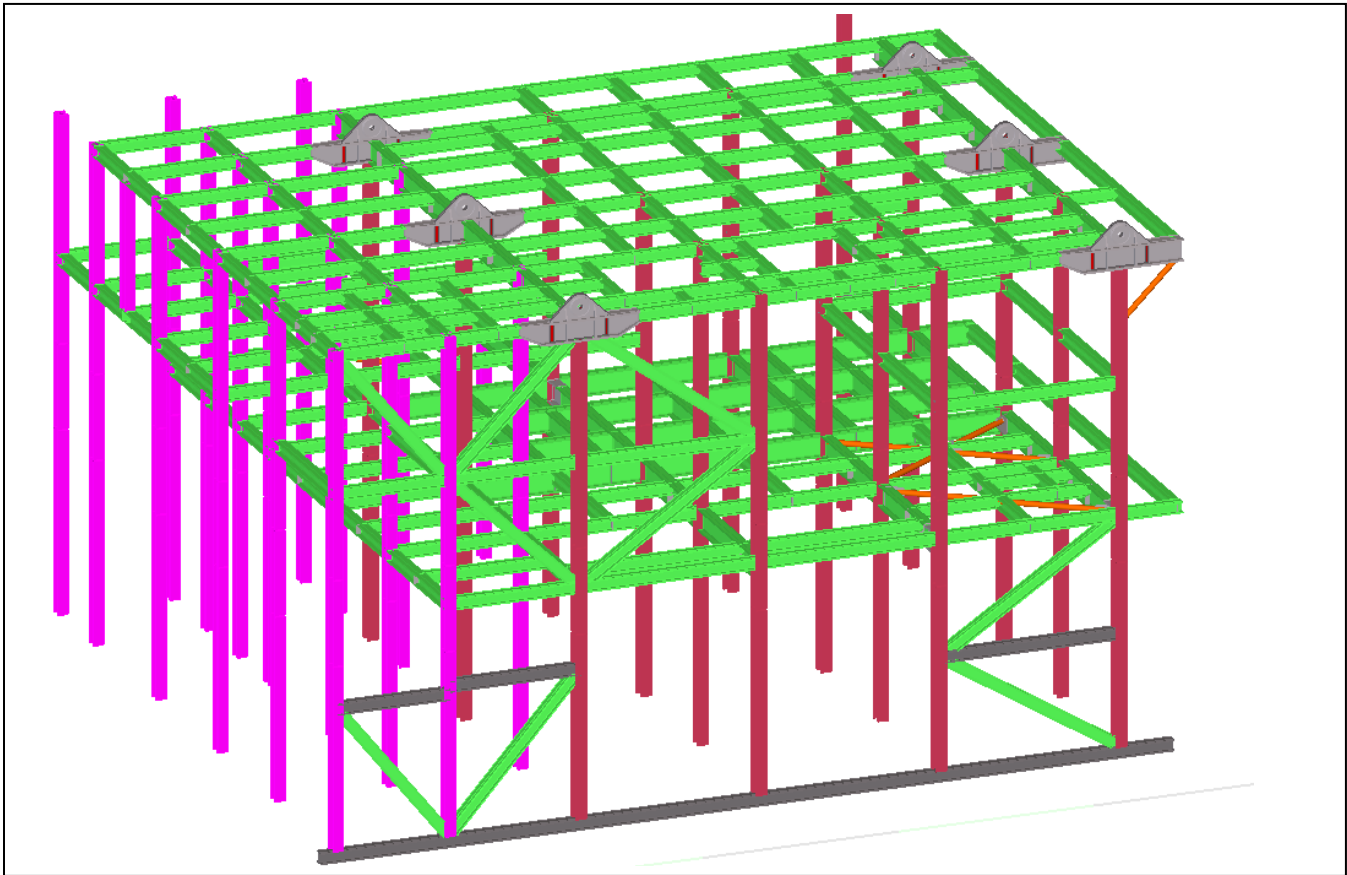
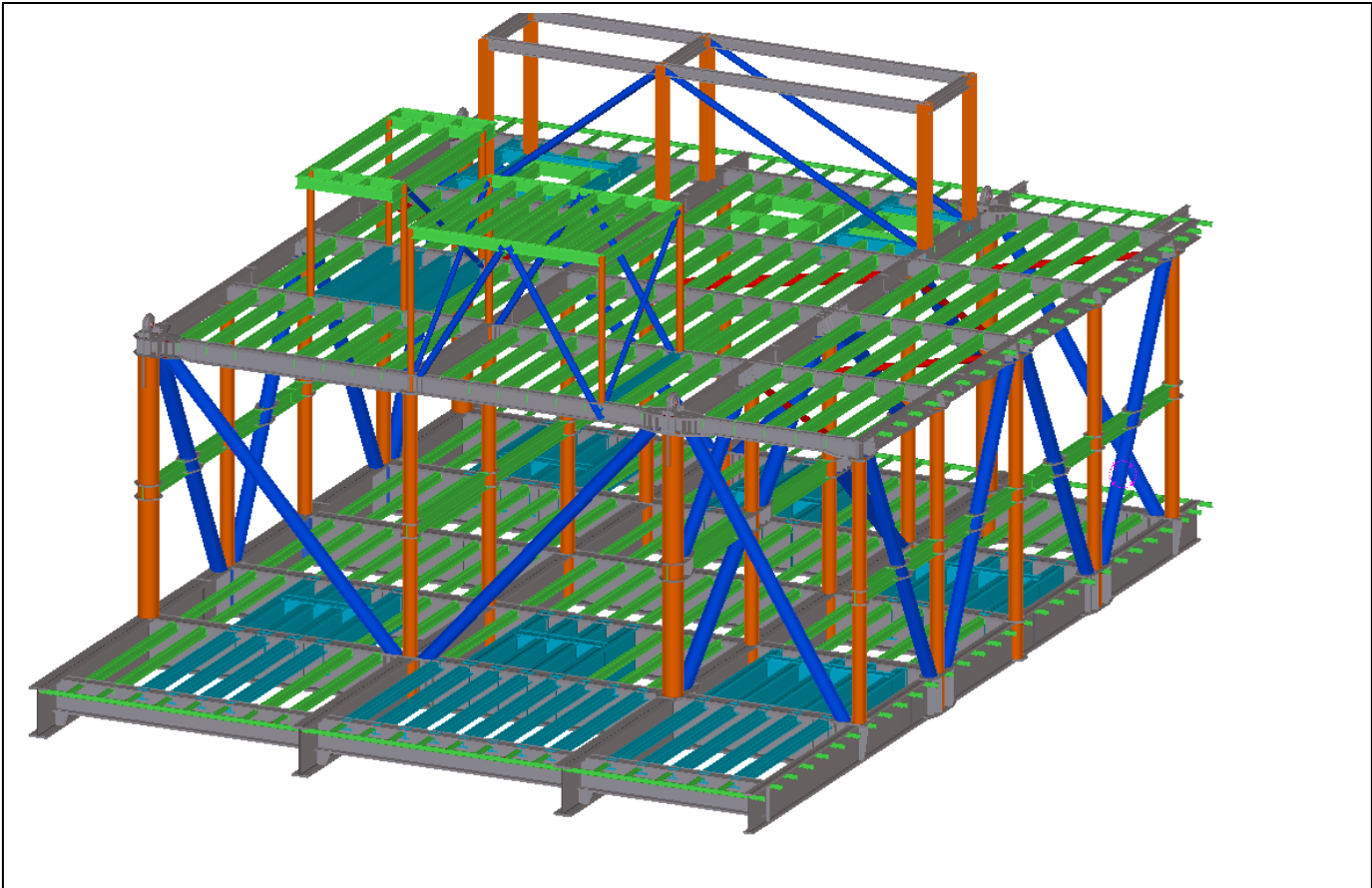


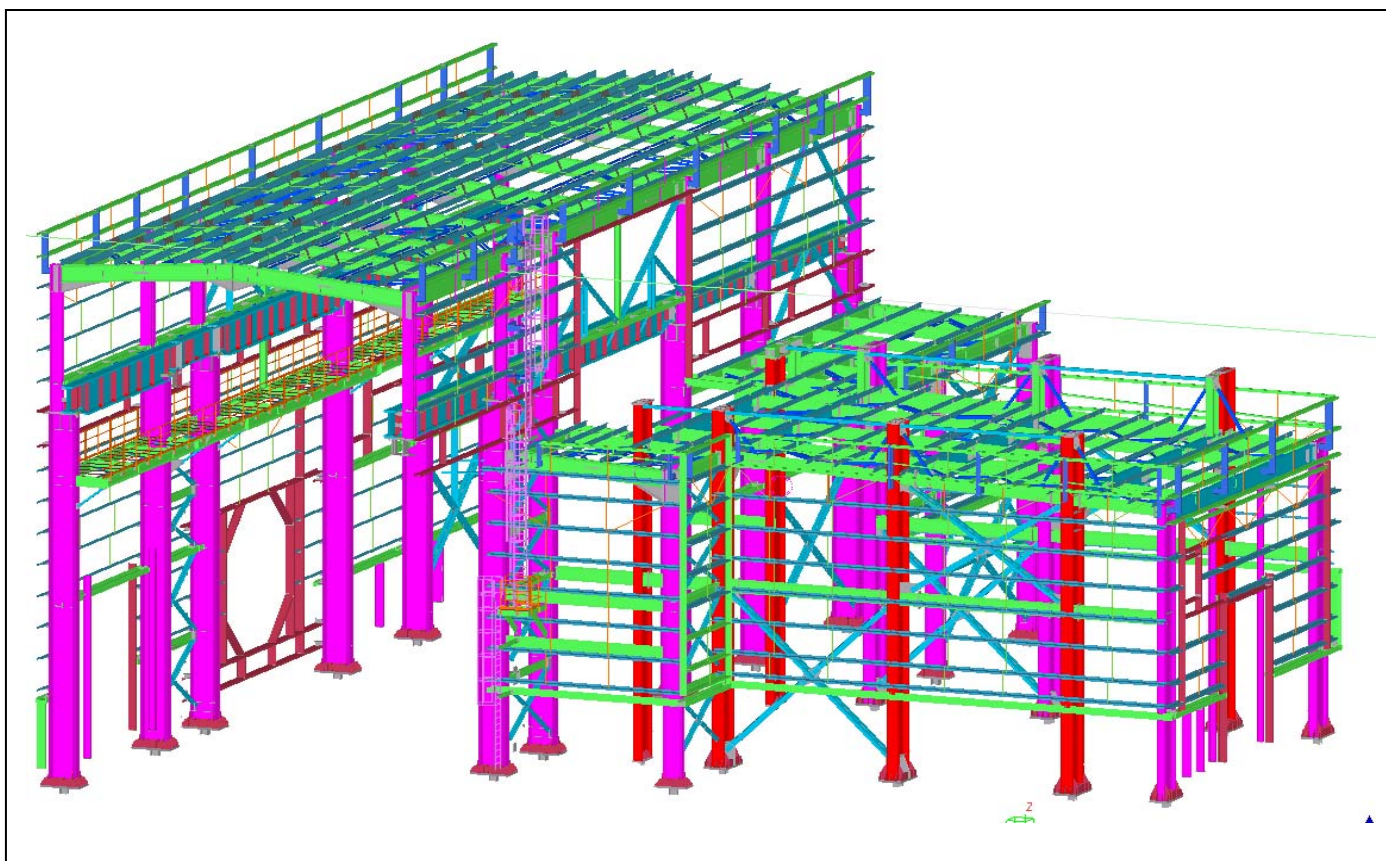
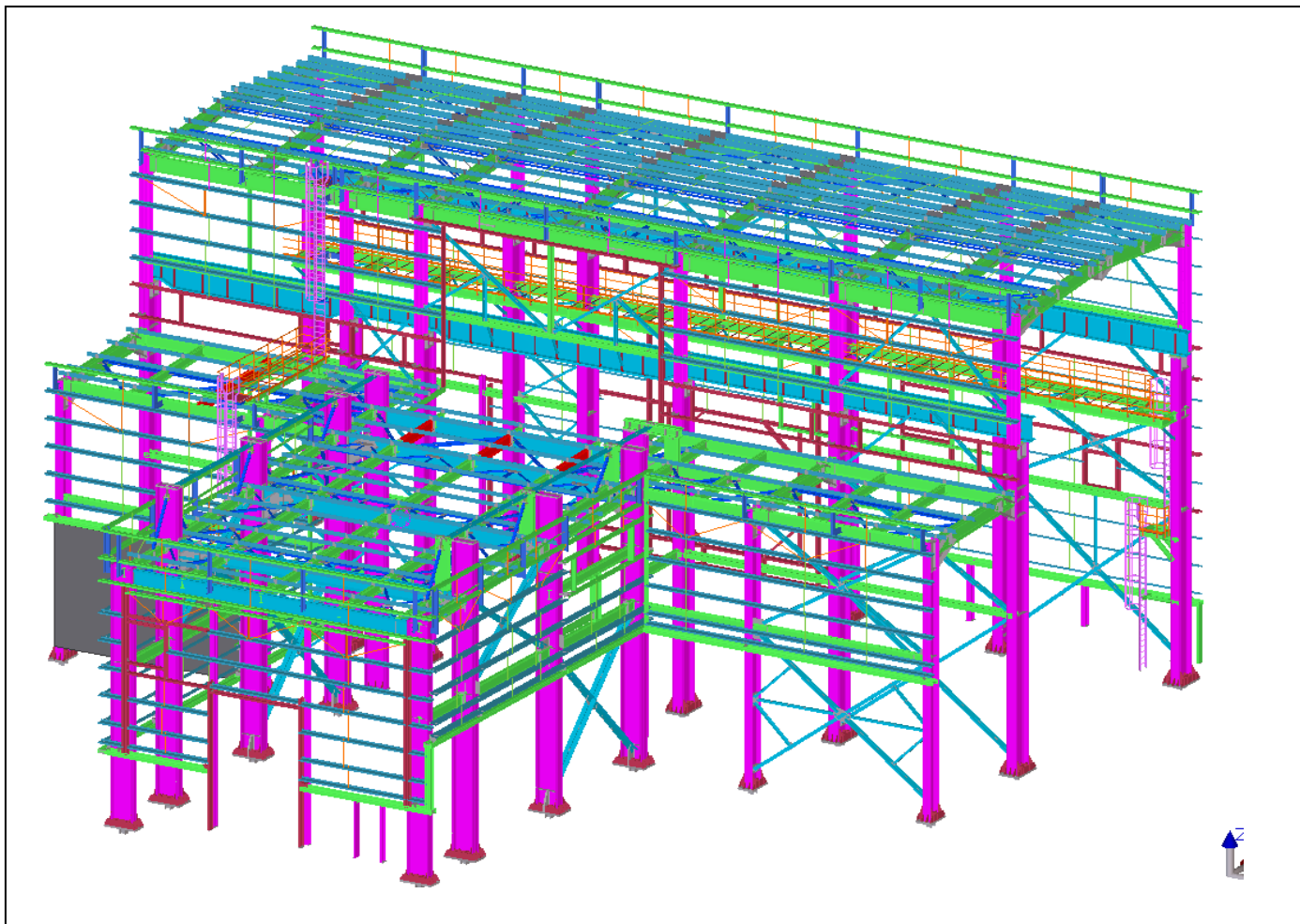


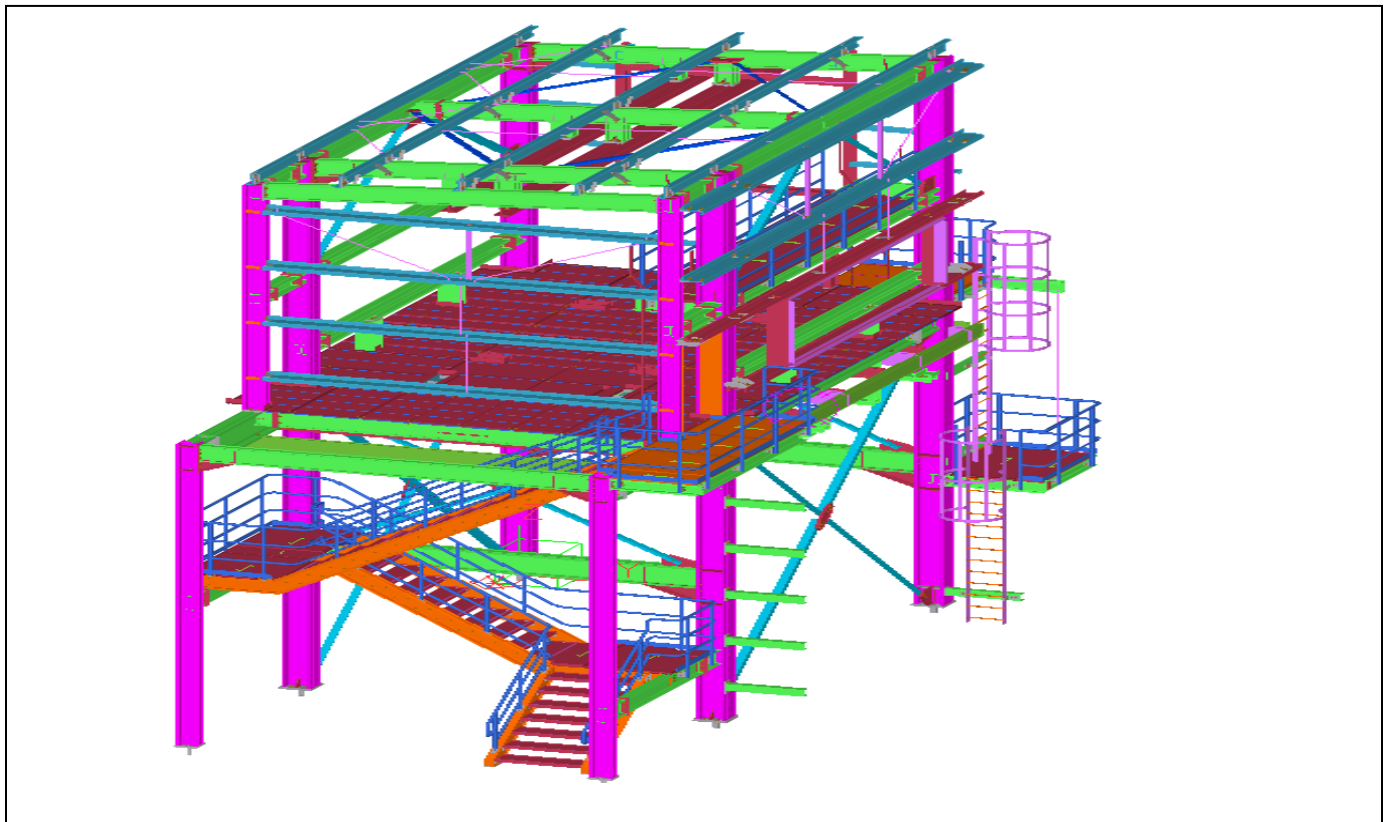
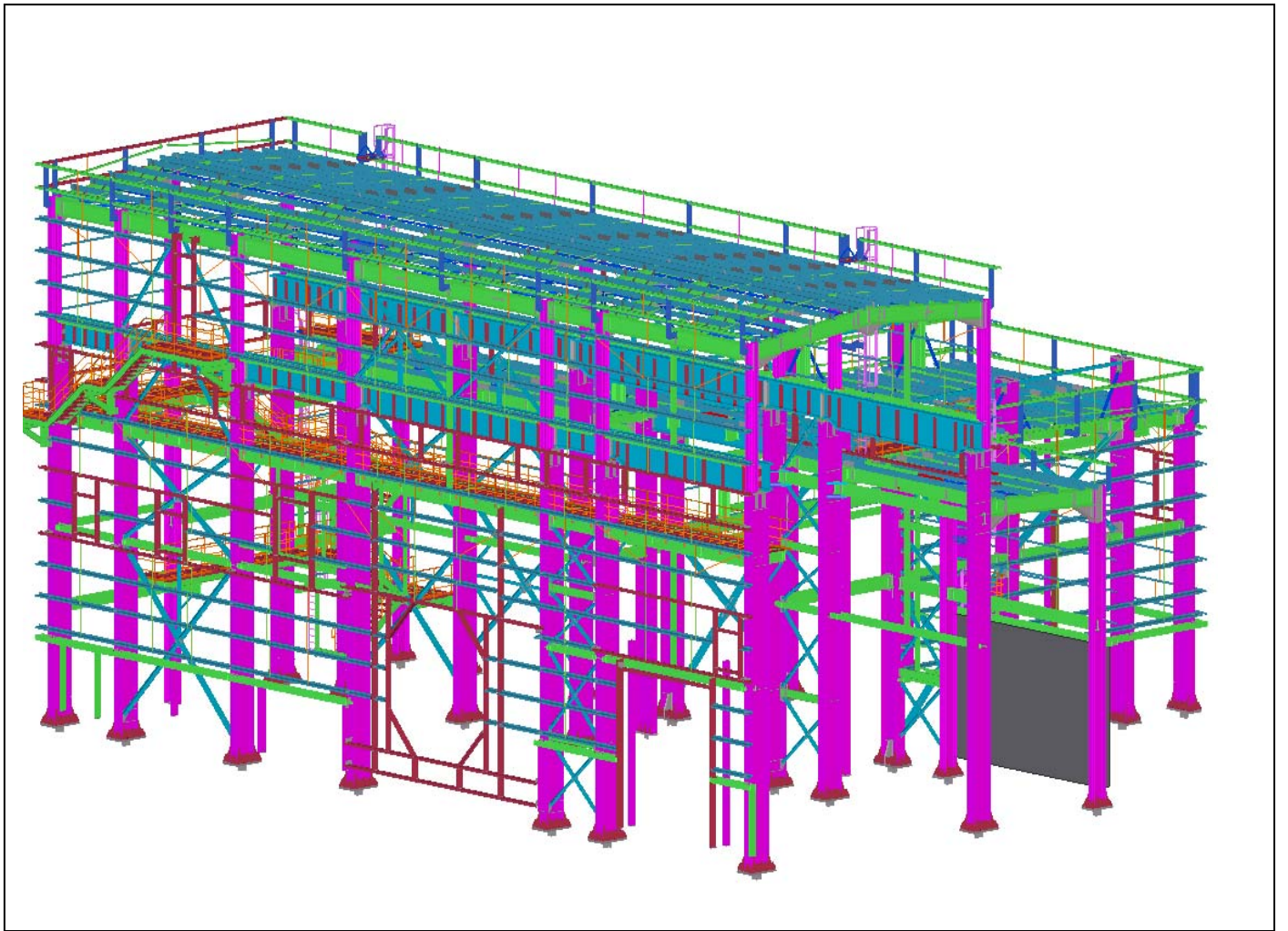


FPSO TOPSIDE MODULES – SBM/SAIPEM









NORTH BELUT ACCOMADATION MODULE – CONOCCO PHILLIPS

